

Appendix A: Health Professional Shortage Areas, Medically Underserved Populations, Medically Underserved Areas, List of Public and Privately Funded Provider Agencies and Work Force Capacity Tables

Health Professional Shortage Area

A population, facility or geographic area can be designated as a Health Professional Shortage Area (HPSA). The HPSA identifies areas or facilities that have insufficient medical provider capacity to meet the needs of that area or population. Each HPSA category has a unique ratio of population to providers, which has been identified as the point at which it can be designated as having a shortage of health professionals.

HPSAs are designations that show health care provider shortages in Primary care, Dental health or Mental health. The following defines the specific types of designations:

Geographic Area

- A shortage of providers for the entire population within a defined geographic area.

Population Groups

- A shortage of providers for a specific population group(s) within a defined geographic area (e.g., low income, migrant farmworkers, racial/ethnic populations and other groups)

Facilities

- Other Facility (OFAC)—public or non-profit private medical facilities serving a population or geographic area designated as a HPSA with a shortage of health providers
- Correctional Facility—medium to maximum security federal and state correctional institutions and youth detention facilities with a shortage of health providers
- State Mental Hospitals—state or county hospitals with a shortage of psychiatric professionals (mental health designations only)
- Automatic Facility HPSAs (Auto HPSAs)—a facility that is automatically designated as a HPSA by statute or through regulation without having to apply for a designation:
- Federally Qualified Health Centers (FQHCs)—health centers that provide primary care to an underserved area or population, offer a sliding fee scale, provide comprehensive services, have an ongoing quality assurance program, and have a governing board of directors. All organizations receiving grants under Health Center Program Section 330 of the Public Health Service Act are FQHCs. Find additional information and requirements (PDF - 259 KB) from the Centers for Medicare and Medicaid Services (CMS).
- FQHC Look-A-Likes (LALs)—LALS are community-based health care providers that meet the requirements of the HRSA Health Center Program, but do not receive Health Center Program funding.

- Indian Health Facilities—Federal Indian Health Service (IHS), Tribally-run, and Urban Indian health clinics that provide medical services to members of federally recognized Tribes and Alaska Natives.
- IHS and Tribal Hospitals—Federal Indian Health Service (IHS), Tribally-run hospitals that provide inpatient and outpatient medical services to members of federally recognized Tribes and Alaska Natives.
- Dual-funded Community Health Centers/Tribal Clinics—health centers that receive funding from Tribal entities and HRSA to provide medical services to members of federally recognized Tribes and Alaska Natives.
- CMS-Certified Rural Health Clinics (RHCs) that meet National Health Service Corps (NHSC) site requirements—outpatient clinics located in non-urbanized areas that are certified as RHCs by CMS and meet NHSC Site requirements including accepting Medicaid, CHIP, and providing services on a sliding fee scale.

Various facilities may submit an application to obtain a designation. HRSA reviews all applications to determine if they meet the eligibility criteria for designation. The main eligibility criterion is that the proposed designation meets a threshold ratio for population to providers.

Table A1: Population to Provider Type Health Professional Shortage Area Ratio

	Primary Care	Mental Health	Dental Health
Geographic	3,500:1	6,000:1 & 20,000:1 CMH and Psychiatrists OR 9,000:1 CMH only 30,000:1 Psy only	5,000:1
Population	3,000:1	4,500:1 & 15,000:1 CMH and Psychiatrists OR 6,000:1 CMH only 20,000:1 Psy only	4,000:1
Facility	1,000:1	2,000:1	1,500:1
	Min Pop 500	Min Inmate Pop 250	Min Pop 1,000

Once designated, HRSA scores HPSAs on a scale of 0-25 for primary care and mental health, and 0-26 for dental health, with higher scores indicating greater need.

HPSA scores are based on a series of factors developed by the National Health Service Corps in determining the priority for assignment of providers as shown in the table below. The lower the score the better the provider to population ratio, the higher the score the greater the priority or need.

Table A2: Health Professional Shortage Area Scoring Calculation

	Primary Care			Dental Health			Mental Health
Factor	Max Pts Awarded	Multiplier	Total Points Possible	Max Pts Awarded	Multiplier	Total Points Possible	Max Pts Awarded
Population: Provider Ratio	5	x 2	= 10	5	x 2	= 10	7
% of Population below FPL	5	x 1	= 5	5	x 2	= 10	5
Travel distance/travel time	5	x 1	= 5	5	x 1	= 5	5
Ratio of children under 18 to adults 18-64	5	x 1	= 5	1	x 1	= 5	3
Ratio of adults 65+ to adults 18-64							3
Substance prevalence							1
Alcohol abuse prevalence							1
Maximum Score	=25			= 26			= 25

As part of the HPSA analysis for the Philadelphia EMA the HRSA data warehouse¹ tool was used to search for providers and geographic areas that held a shortage designation. With respect to Federal and State correctional facilities, in order to have a HPSA designation the institutions must be a medium or maximum-security facility, have at least 250 inmates and meet the provider ratio to internees per year (primary care 1,000:1; dental 1,500:1; mental health 2,000:1).

¹ <https://datawarehouse.hrsa.gov/tools/analyzers/hpsafind.aspx>

Table A3: Health Professional Shortage Facilities

County Name	HPSA ID	HPSA Name	HPSA Class	Designation Type	HPSA Score	HPSA Designation Last Update Date
Burlington County	634999340B	Albert C. Wagner Youth Correctional Facility	Dental Health	Correctional Facility	6	5/31/2013
Burlington County	7349993403	Albert C. Wagner Youth Correctional Facility	Mental Health	Correctional Facility	3	5/31/2013
Burlington County	6349993420	Federal Correctional Institution - Fort Dix	Dental Health	Correctional Facility	12	2/23/2011
Burlington County	1349993453	Federal Correctional Institution - Fort Dix	Primary Care	Correctional Facility	12	2/23/2011
Camden County	6349993433	Camcare Health Corporation	Dental Health	Comprehensive Health Center	15	12/2/2016
Camden County	7349993430	Camcare Health Corporation	Mental Health	Comprehensive Health Center	21	12/2/2016
Camden County	1349993455	Camcare Health Corporation	Primary Care	Comprehensive Health Center	13	12/2/2016
Camden County	6349993450	Osborn Family Health Center	Dental Health	Federally Qualified Health Center Look A Like	11	12/20/2017
Camden County	7349993450	Osborn Family Health Center	Mental Health	Federally Qualified Health Center Look A Like	8	12/20/2017
Camden County	1349993491	Osborn Family Health Center	Primary Care	Federally Qualified Health Center Look A Like	6	12/20/2017
Camden County	6349993442	Project H.O.P.E. Inc.	Dental Health	Comprehensive Health Center	21	12/21/2017
Camden County	7349993446	Project H.O.P.E. Inc.	Mental Health	Comprehensive Health Center	18	12/21/2017
Camden County	1349993482	Project H.O.P.E. Inc.	Primary Care	Comprehensive Health Center	15	12/22/2017
Chester County	64299942G5	La Comunidad Hispana Inc.	Dental Health	Comprehensive Health Center	13	1/2/2013
Chester County	74299942KX	La Comunidad Hispana Inc.	Mental Health	Comprehensive Health Center	19	1/2/2013
Chester County	14299942KX	La Comunidad Hispana Inc.	Primary Care	Comprehensive Health Center	14	1/2/2013
Delaware County	642999423B	Chespenn Health Service	Dental Health	Comprehensive Health Center	20	3/22/2013
Delaware County	142999424W	Chespenn Health Service	Primary Care	Comprehensive Health Center	16	3/22/2013

County Name	HPSA ID	HPSA Name	HPSA Class	Designation Type	HPSA Score	HPSA Designation Last Update Date
Delaware County	7429994266	Chespenn Health Services	Mental Health	Comprehensive Health Center	18	3/22/2013
Delaware County	64299942FR	State Correctional Institution - Chester	Dental Health	Correctional Facility	3	3/20/2014
Delaware County	74299942A9	State Correctional Institution - Chester	Mental Health	Correctional Facility	3	10/1/2012
Delaware County	14299942I7	State Correctional Institution - Chester	Primary Care	Correctional Facility	3	6/15/2012
Montgo County	64299942FA	Community Health and Dental Care	Dental Health	Comprehensive Health Center	12	5/29/2013
Montgo County	74299942K9	Community Health and Dental Care	Mental Health	Comprehensive Health Center	19	5/29/2013
Montgo County	14299942KA	Community Health and Dental Care	Primary Care	Comprehensive Health Center	15	5/29/2013
Montgo County	64299942A2	State Correctional Institution - Graterford	Dental Health	Correctional Facility	6	6/15/2012
Montgo County	14299942I8	State Correctional Institution - Graterford	Primary Care	Correctional Facility	3	6/15/2012
Phila County	642999422V	Covenant House Health Services	Dental Health	Comprehensive Health Center	25	12/30/2013
Phila County	7429994261	Covenant House Health Services	Mental Health	Comprehensive Health Center	16	12/30/2013
Phila County	142999424R	Covenant House Health Services	Primary Care	Comprehensive Health Center	18	12/30/2013
Phila County	642999422D	Delaware Valley Community Health, Inc.	Dental Health	Comprehensive Health Center	19	4/8/2013
Phila County	7429994247	Delaware Valley Community Health, Inc.	Mental Health	Comprehensive Health Center	20	4/8/2013
Phila County	14299942B2	Delaware Valley Community Health, Inc.	Primary Care	Comprehensive Health Center	16	4/8/2013
Phila County	642999423H	Department of Public Health-City of Philadelphia	Dental Health	Federally Qualified Health Center Look A Like	14	1/30/2013
Phila County	7429994271	Department of Public Health-City of Philadelphia	Mental Health	Federally Qualified Health Center Look A Like	18	1/30/2013
Phila County	14299942B7	Department of Public Health-City of Philadelphia	Primary Care	Federally Qualified Health Center Look A Like	17	1/30/2013

County Name	HPSA ID	HPSA Name	HPSA Class	Designation Type	HPSA Score	HPSA Designation Last Update Date
Phila County	642999425H	Esperanza Health Center	Dental Health	Comprehensive Health Center	19	10/22/2012
Phila County	7429994294	Esperanza Health Center	Mental Health	Comprehensive Health Center	16	10/22/2012
Phila County	14299942F5	Esperanza Health Center	Primary Care	Comprehensive Health Center	16	1/14/2013
Phila County	6421903643	Federal Detention Center-Philadelphia	Dental Health	Correctional Facility	12	12/29/2015
Phila County	7429839375	Federal Detention Center-Philadelphia	Mental Health	Correctional Facility	12	12/29/2015
Phila County	1426446580	Federal Detention Center-Philadelphia	Primary Care	Correctional Facility	12	12/29/2015
Phila County	642999422G	Greater Philadelphia Health Action	Dental Health	Comprehensive Health Center	20	3/4/2013
Phila County	7429994245	Greater Philadelphia Health Action	Mental Health	Comprehensive Health Center	21	12/2/2013
Phila County	142999423R	Greater Philadelphia Health Action	Primary Care	Comprehensive Health Center	17	8/4/2017
Phila County	642999421F	Philadelphia Fight	Dental Health	Comprehensive Health Center	21	3/6/2014
Phila County	7429994208	Philadelphia Fight	Mental Health	Comprehensive Health Center	21	3/6/2014
Phila County	142999423O	Philadelphia Fight	Primary Care	Comprehensive Health Center	15	3/6/2014
Phila County	642999422T	Philadelphia Health Management Corporation	Dental Health	Comprehensive Health Center	20	9/18/2012
Phila County	7429994259	Philadelphia Health Management Corporation	Mental Health	Comprehensive Health Center	18	9/18/2012
Phila County	142999424P	Philadelphia Health Management Corporation	Primary Care	Comprehensive Health Center	16	9/18/2012
Phila County	642999421G	Project H.O.M.East	Dental Health	Comprehensive Health Center	21	11/1/2013
Phila County	7429994209	Project H.O.M.East	Mental Health	Comprehensive Health Center	21	11/1/2013
Phila County	142999423Z	Project H.O.M.East	Primary Care	Comprehensive Health Center	15	11/1/2013
Phila County	642999422L	Quality Community Health	Dental Health	Comprehensive Health Center	25	9/27/2013
Phila County	7429994249	Quality Community Health	Mental Health	Comprehensive Health Center	20	9/27/2013
Phila County	14299942B4	Quality Community Health	Primary Care	Comprehensive Health Center	19	9/27/2013

County Name	HPSA ID	HPSA Name	HPSA Class	Designation Type	HPSA Score	HPSA Designation Last Update Date
Phila County	642999422E	Resources for Human Development	Dental Health	Comprehensive Health Center	14	11/13/2012
Phila County	7429994244	Resources for Human Development	Mental Health	Comprehensive Health Center	20	6/17/2014
Phila County	142999423N	Resources for Human Development	Primary Care	Comprehensive Health Center	17	11/15/2012
Phila County	642999425J	Sayre Health Center	Dental Health	Comprehensive Health Center	25	9/10/2013
Phila County	7429994279	Sayre Health Center	Mental Health	Comprehensive Health Center	19	9/10/2013
Phila County	14299942F7	Sayre Health Center	Primary Care	Comprehensive Health Center	17	9/10/2013
Phila County	642999423D	Spectrum Health Services, Inc.	Dental Health	Comprehensive Health Center	16	4/30/2012
Phila County	7429994268	Spectrum Health Services, Inc.	Mental Health	Comprehensive Health Center	11	10/26/2002
Phila County	142999424Y	Spectrum Health Services, Inc.	Primary Care	Comprehensive Health Center	14	4/30/2012
Phila County	74299942KQ	Urban Health Initiatives Inc.	Mental Health	Federally Qualified Health Center Look A Like	14	5/14/2012
Phila County	14299942KS	Urban Health Initiatives Inc.	Primary Care	Federally Qualified Health Center Look A Like	6	5/14/2012
Phila County	64299942FZ	Urban Health Initiatives, Inc.	Dental Health	Federally Qualified Health Center Look A Like	10	5/14/2012

Each provider listed has a HPSA designation

The following figure represents the low-income population HPSA designation for Philadelphia County. The HRSA data warehouse² was searched for each county in the EMA to identify both HPSA and Medically Underserved Areas and Populations. The shortage areas identified by census tract were solely for dental services and were mapped using ESRI ArcMap 10.5.1. The section which is primarily within North Philadelphia, shown as blue, has an overall score of 12, and has a total of 22 full time equivalent (FTE) dental providers for an estimated population of 210,000. The Olney or Mount Airy section shown in purple, has a score of 14 and 22 FTEs for an estimated population total as of 2016 of 190,000. The area toward the lower northeast or green section shown also had a score of 14 but only 10 FTE dental providers for an estimated population of 220,000. The yellow section shown, with an estimated population as of 2016 of 340,000 representing portions of west and southwest Philadelphia, had 22 FTEs and a score of 14.

² <https://datawarehouse.hrsa.gov/tools/analyzers/HpsaFindResults.aspx>

Figure A1: Philadelphia County Low-income Health Professional Shortage Areas for Dental

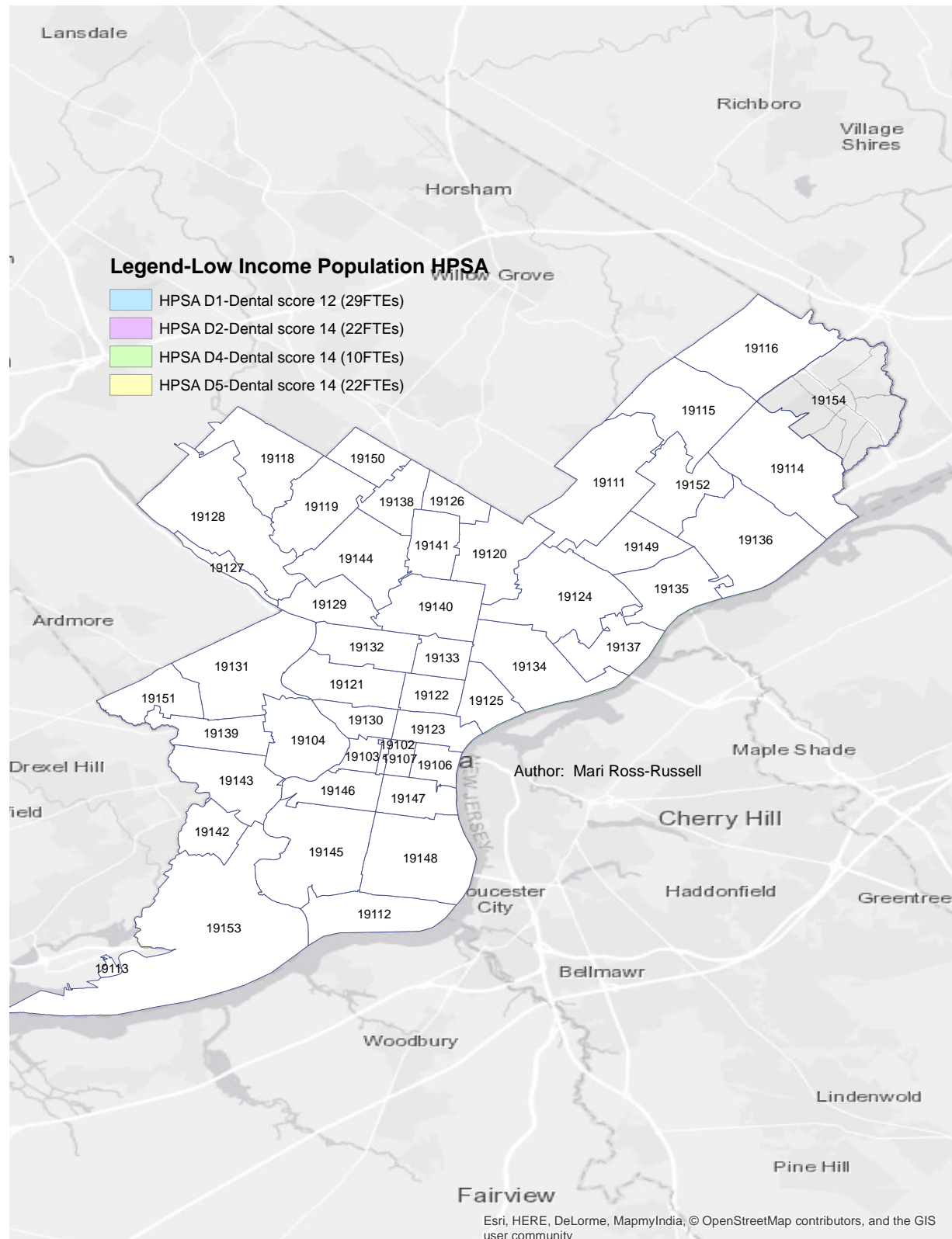


Figure A2: Delaware County Low-income Health Professional Shortage Areas for Dental

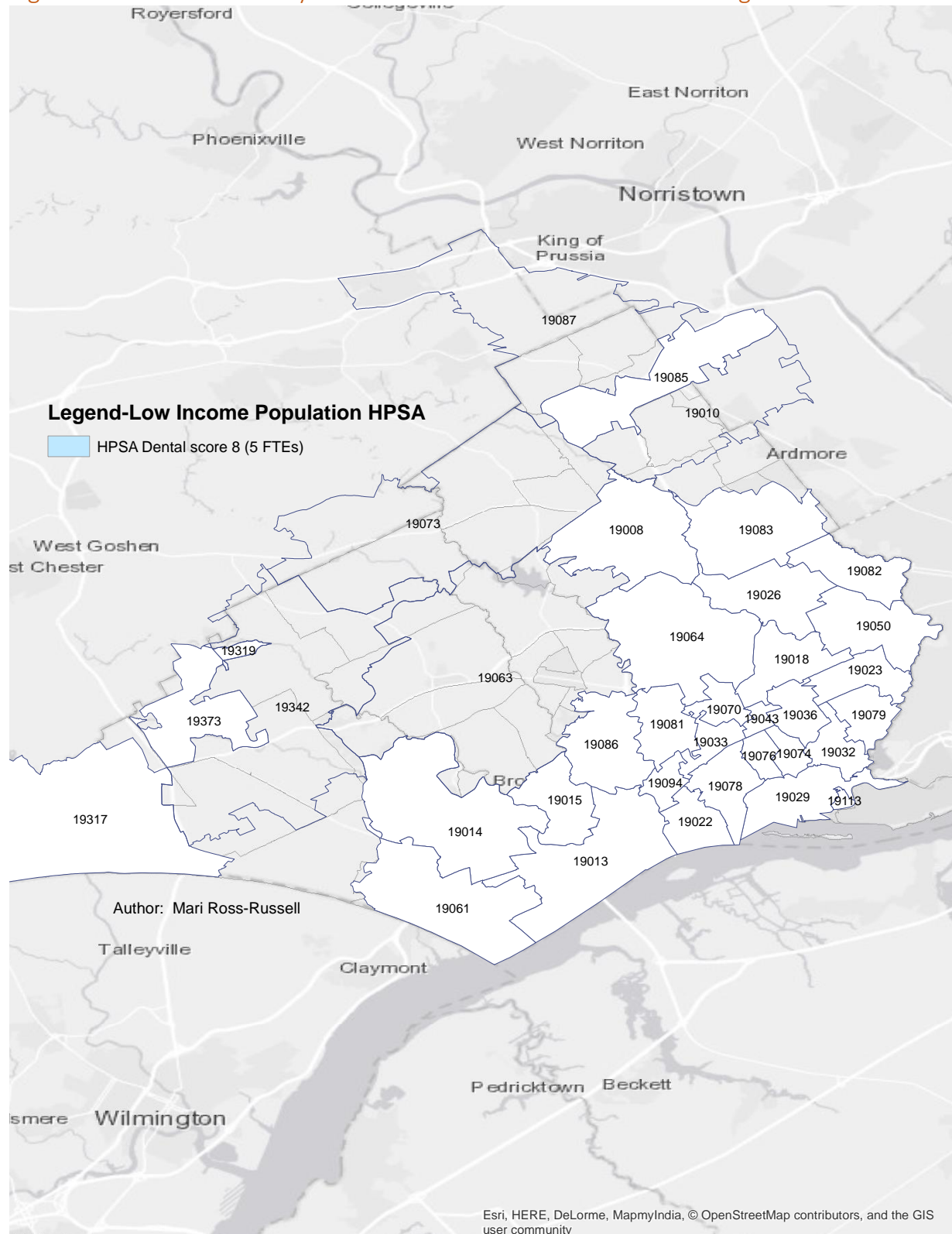


Figure 2 shows the HPSA for HPSA Low-income populations by Dental provider shortage. The area shown in blue is Chester City and has a HPSA designation score of 8 and 5 FTEs for an estimated population of 38,000. Philadelphia and Delaware counties are the only two counties in the EMA to have the HPSA Low-Income population designation in combination with Dental provider identified by census tract. With respect to the Medically Underserved Areas and Populations the only county to have a governor's exception designation at the HRSA data warehouse was Bucks County³.

Medically Underserved Areas and Populations (MUA/Ps)

Medically Underserved Areas (MUAs) and Medically Underserved Populations (MUPs) identify the various geographic areas and populations/population groups that have insufficient access to primary medical care services as described by HRSA.

The type of geographic area associated with MUAs can vary in that the designation is based on having a shortage of primary care health services for residents. The type of geographic area is as follows:

- A county;
- A group of neighboring counties;
- A group of urban census tracts; or
- A group of county or civil divisions.

MUPs are specific sub-groups of people living in a defined geographic area with a shortage of primary care health services. These groups may face economic, cultural, or linguistic barriers to health care. Examples include, but are not limited to, those who are:

- Homeless;
- Low-income;
- Medicaid-eligible;
- Native American; or
- migrant farmworkers.

MUA/P designations are based on the Index of Medical Underservice (IMU). IMU score is calculated based on four criteria:

- the population to provider ratio;
- the percent of the population below the federal poverty level;
- the percent of the population over age 65; and
- the infant mortality rate.

IMU score can range from 0 to 100, where zero represents the completely underserved. Areas or populations with IMU scores of 62.0 or less qualify for designation as an MUA/P.

Exceptional MUP Designations

It is possible to request a MUP designation for populations which do not meet the established criteria, by doing the following:

³ <https://datawarehouse.hrsa.gov/tools/analyzers/muafind.aspx>

- Explaining the unusual, documented local conditions that prevent access to, or demonstrate the lack of, personal health services, and
- Submitting a written recommendation, with supporting data, from that state's governor or other Chief Executive Officer, and the local health official.

Governor-Designated and Secretary-Certified Shortage Areas for Rural Health Clinics

Governors may designate areas of their state as shortage areas specifically for the purpose of Rural Health Clinic (RHC) certification. These areas must meet specific criteria.

What are the Criteria for Governor's Designated Shortage Areas?

The process for governor's designation for Rural Health Clinic certification requires the governor, or designee, submit a Shortage Area plan that contains the criteria a state will use. As these are governor's designated shortage areas, the criteria is determined by the governor and approved by HRSA, however, the governor's criteria typically include the following requirements:

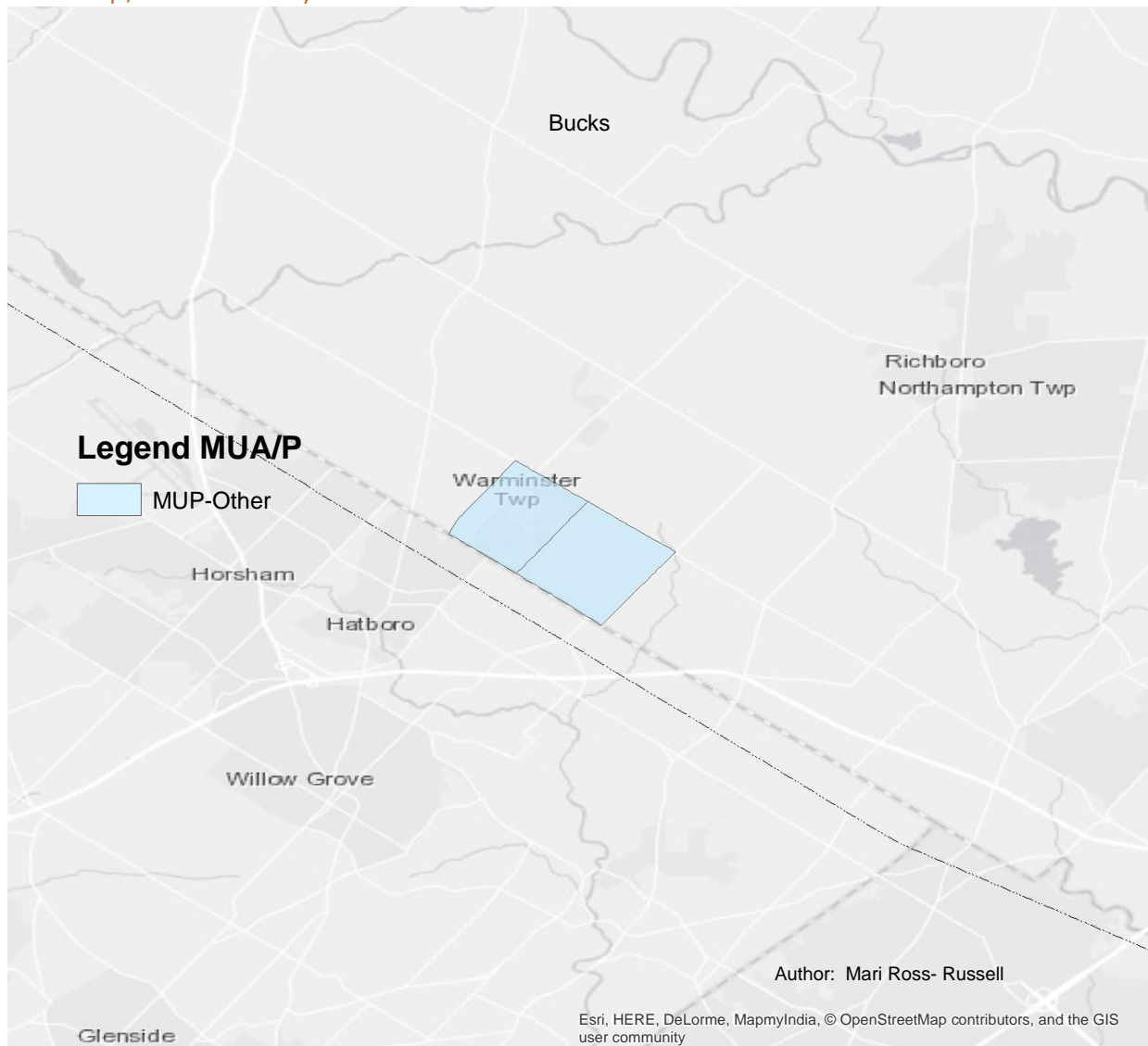
- The service area must be located in a non-urbanized area and be a contiguous area;
- The applicant clinic must not be eligible for, or located in, a HPSA or MUA designated within the last 4 years (with the caveat that the RHC's service area may include a portion of an existing HPSA service area);
- The applicant clinic must accept patients covered by Medicare, Medicaid and the state's Children's Health Insurance Program and have a sliding fee scale for patients below 200% of poverty;
- The service area must have a population-to-primary care physician ratio of at least 2,400:1, or a ratio between 2,000:1 and 2,399:1 and meet one or more of the following high-need health indicators:
 - Service area's percent of population under 200 percent of poverty is higher than state average;
 - Percent of population age 65 and older is higher than the state average;
 - Percent of population that is unemployed is higher than the state average; or
 - Percent of population that is uninsured is higher than the state average.
 - Percent of population with unusually high health indicator rates, such as heart disease, diabetes, chronic respiratory disease, and/or cancers.

To qualify as a Rural Health Clinic, a facility must be located in:

- A non-urbanized area, as defined by the U.S. Census Bureau; and
- An area currently designated within the last four years by HRSA as one of the following types of federally-designated or certified shortage areas:
 - Primary Care Geographic Health Professional Shortage Area (HPSA)
 - Primary Care Population-Group HPSA
 - Medically Underserved Area

The areas within the Philadelphia EMA that have been identified as either a medically underserved area or population and have been presented in the next series of maps. The data was current as of March 5, 2018 and each of the areas identified had an existing designation at the time the maps were created and had not had the designation withdrawn.

Figure A3: Medically Underserved Population – Governor’s Exception Warminster Township, Bucks County Index of Medical Underservice Score = 0

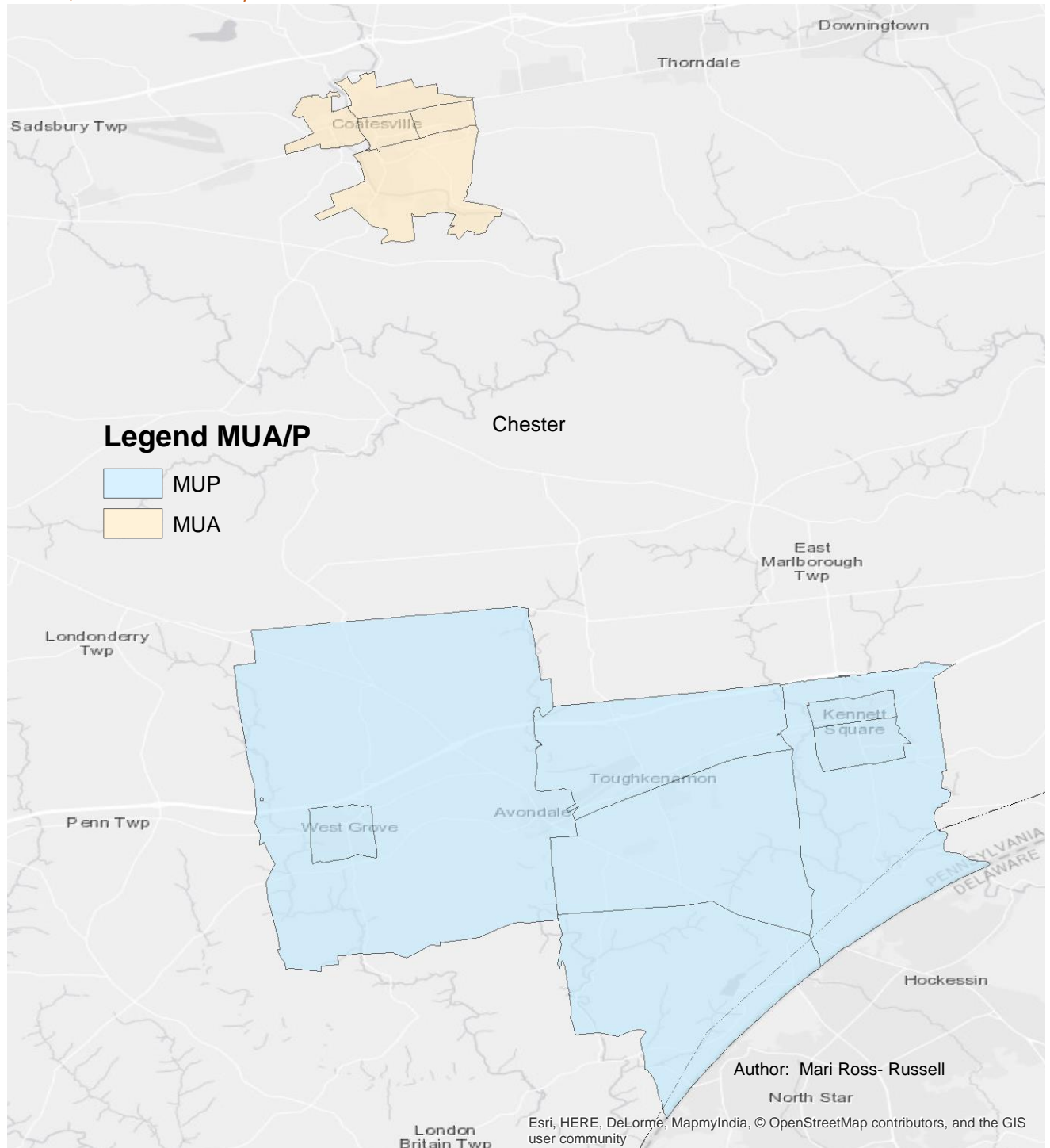


Within Bucks County, Warminster Township has a designation as a Governor’s Exception Medically Underserved Population with an index of Medical Underservice score of 0 (Figure A3). A score of zero according to HRSA represents a completely underserved population.

Figure A4 represents areas within Chester County. The medically underserved population in this case are non-English speaking Hispanic migrant farm workers and low-income populations which are shown in blue. The IMU score for this population is 54.60. The populations identified are within the Avondale borough, London Grove borough, Kennett Square borough, Kennett Township and West Grove borough.

The areas shown in tan in the same figure represent medically underserved areas with an IMU of 61.50. These areas are Coatesville City, Modena borough and South Coatesville borough.

Figure A4: Medically Underserved Population, Migrant Farm Workers and Non-English-Speaking Hispanics as well as Low Income Population, Index of Medical Underservice Score = 54.60 and Medically Underserved Area, Index of Medical Underservice Score = 64.50, Chester County



The areas in the figure above, A4, represent the MUP and MUA in Chester County. As you can see from the map there are a few townships, towns, boroughs and or cities highlighted. Coatesville is the MUA

with a score of 64.50 and is shown in tan. The area in light blue is for MUP and in this case the populations are non-English speaking Hispanics, migrant farm workers and low-income. The overall score out of 100 is 54.60.

Figure A5: Medically Underserved Area, Index of Medical Underservice Score = 55.80, Delaware County

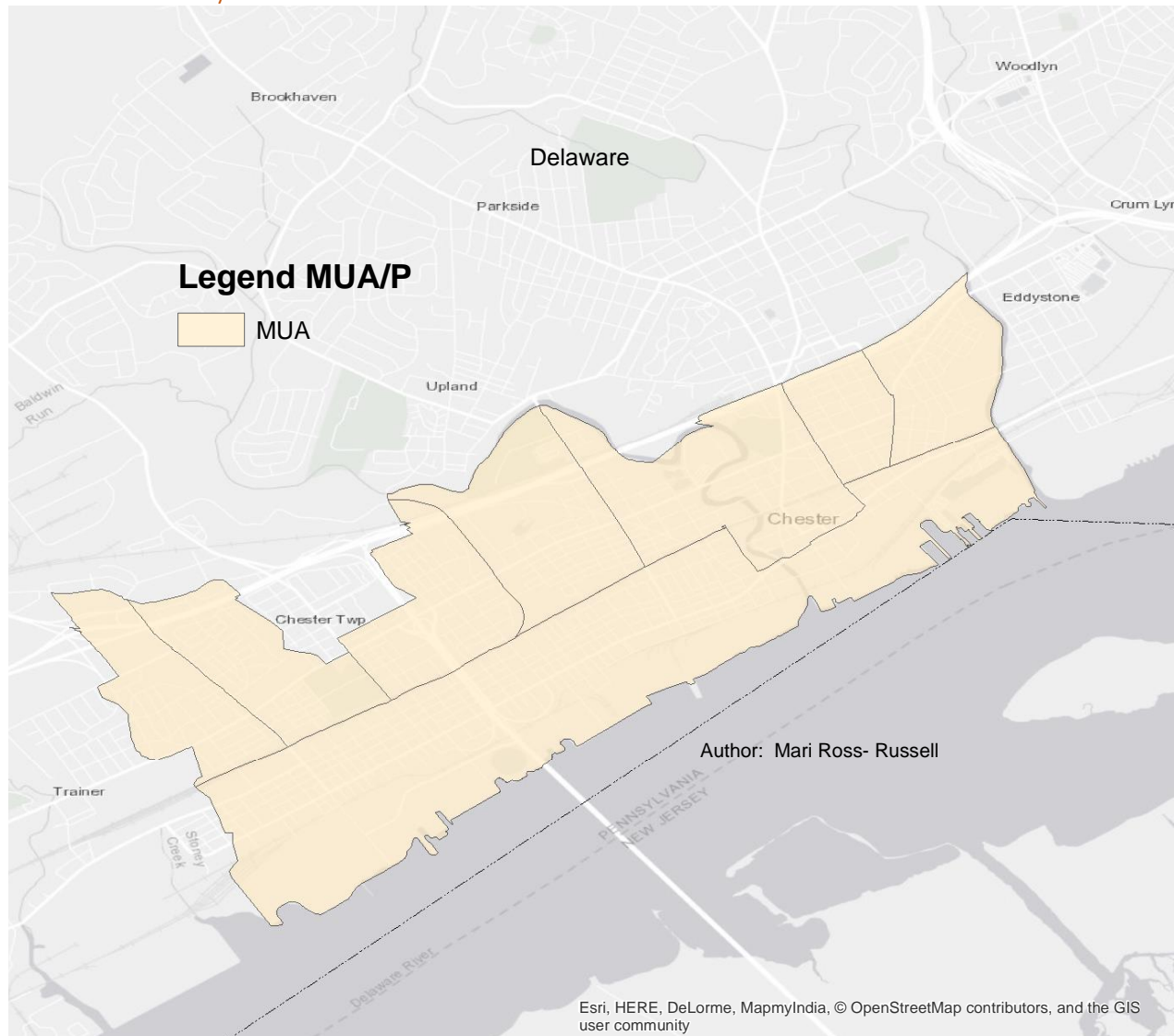
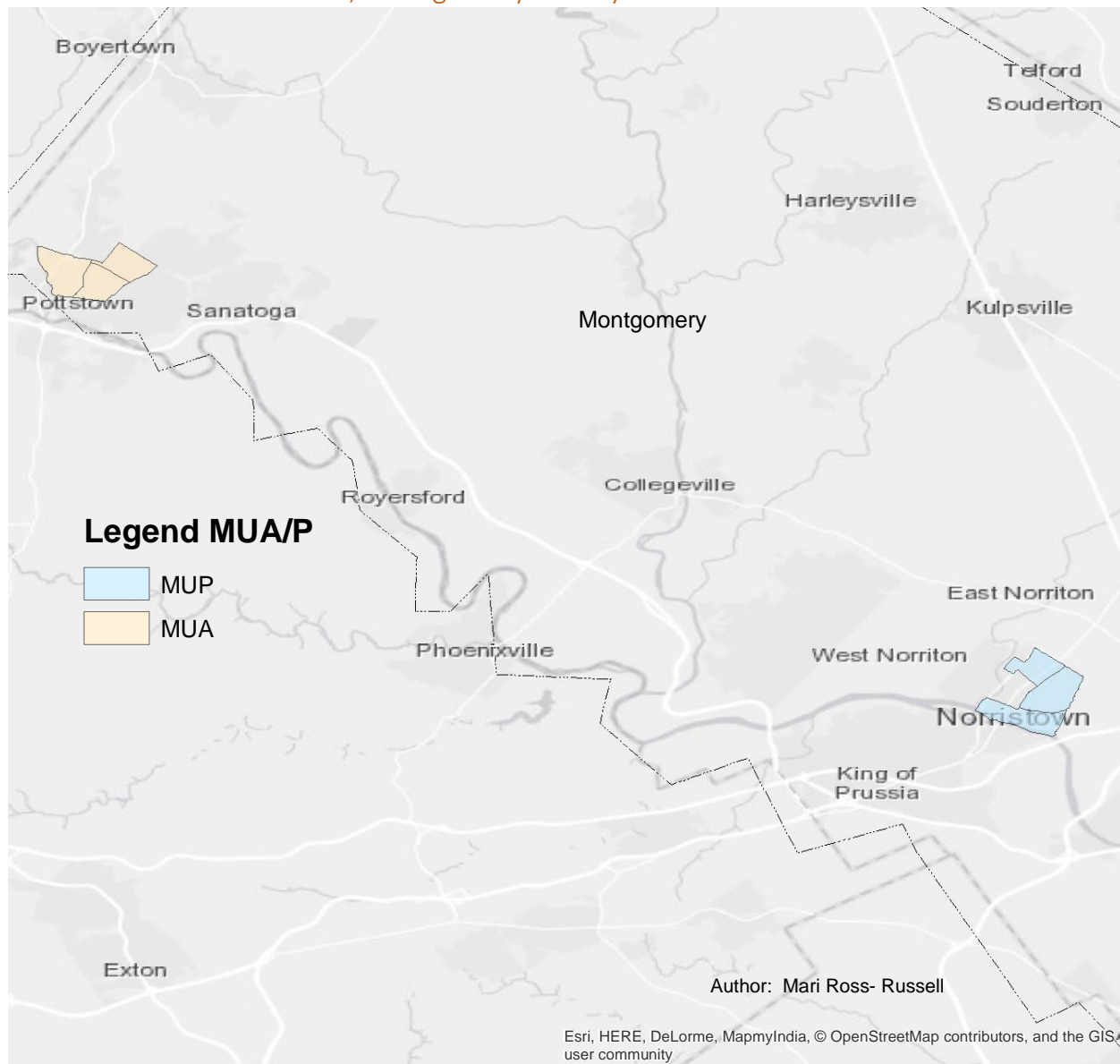


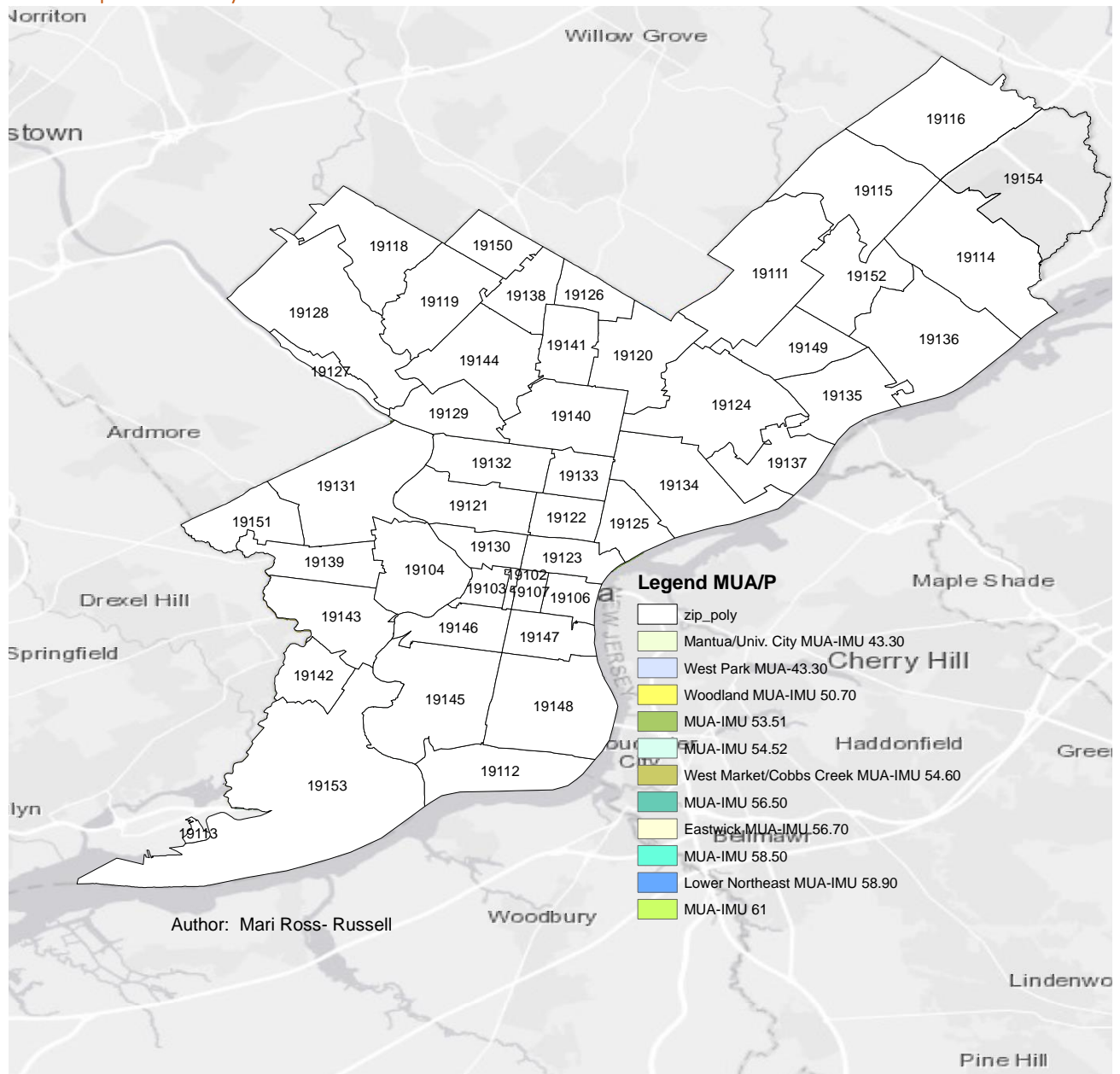
Figure A5 show parts of Chester City in Delaware County and represent a medically underserved area. The score is 55.80 out of 100.

Figure A6: Medically Underserved Population, Low Income Population, Index of Medical Underservice Score = 61.90 and Medically Underserved Area, Index of Medical Underservice Score = 58.70, Montgomery County



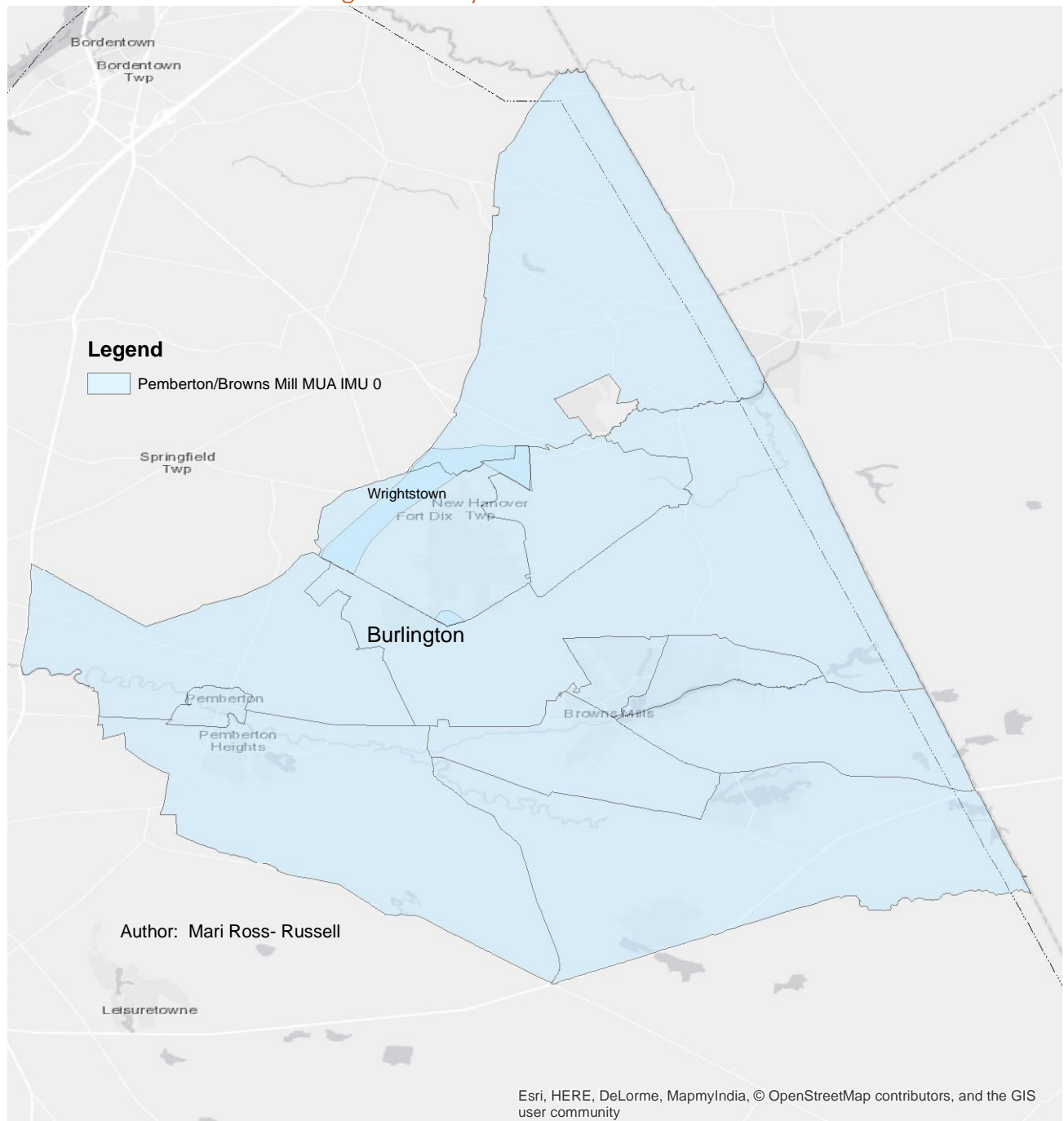
In the case of Figure A6, parts of Pottstown and Norristown within Montgomery County were identified as either an MUP or MUA. Sections of Pottstown have an MUA score of 58.70 and areas within Norristown have an Low Income MUP score of 61.90.

Figure A7: Medically Underserved Area, Various Index of Medical Underservice Scores, Philadelphia County



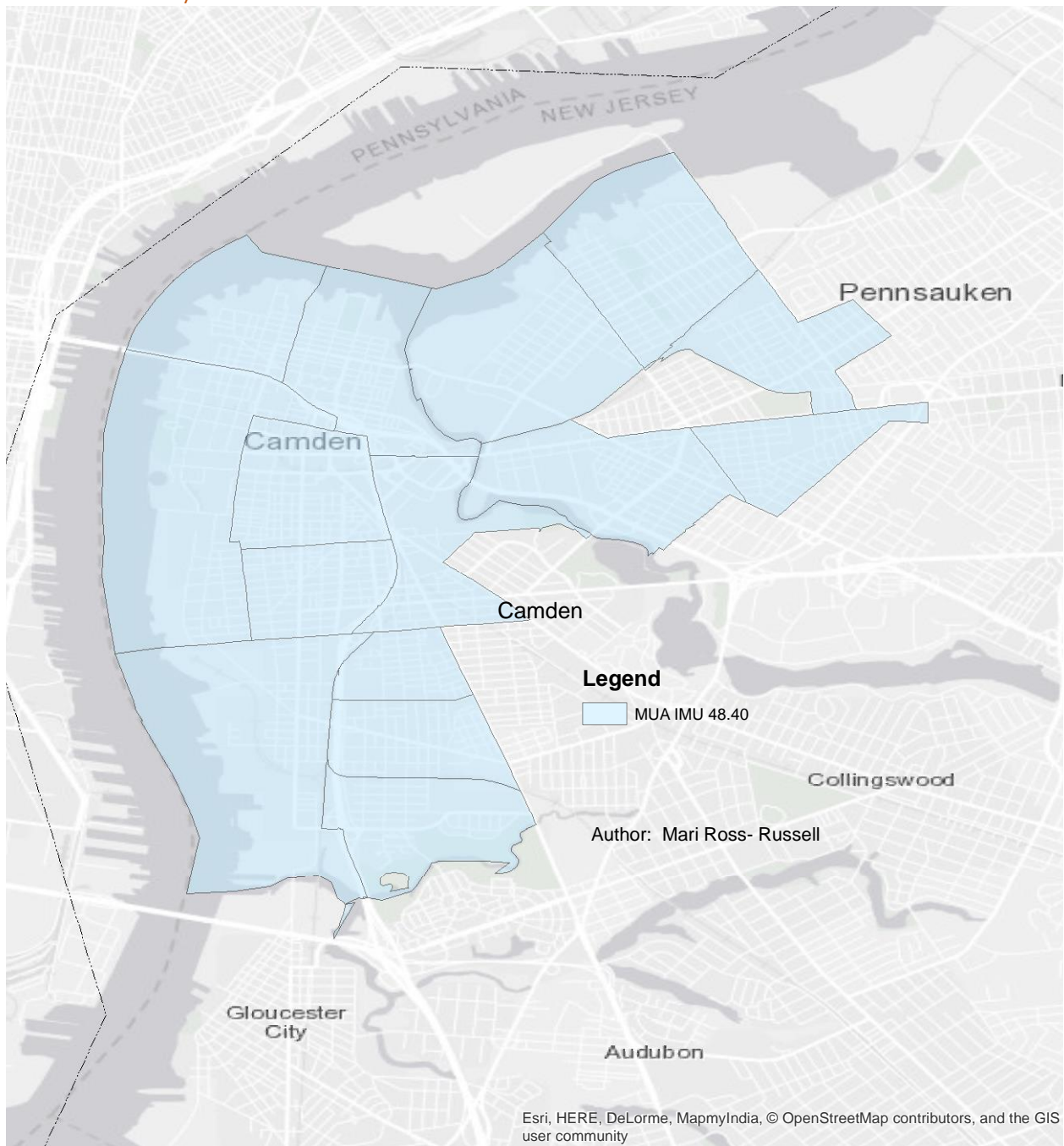
Philadelphia has several areas designated as either a MUP or MUA. The eleven areas and scores are shown in the legend for the map.

Figure A8: Medically Underserved Population, Low Income Population, Index of Medical Underservice Score = 0 Burlington County



The medically underserved areas shown in Figure A8 represent one of the few areas with a zero designation or an area that is considered to be completely underserved.

Figure A9: Medically Underserved Area, Index of Medical Underservice Score = 48.40
Camden County



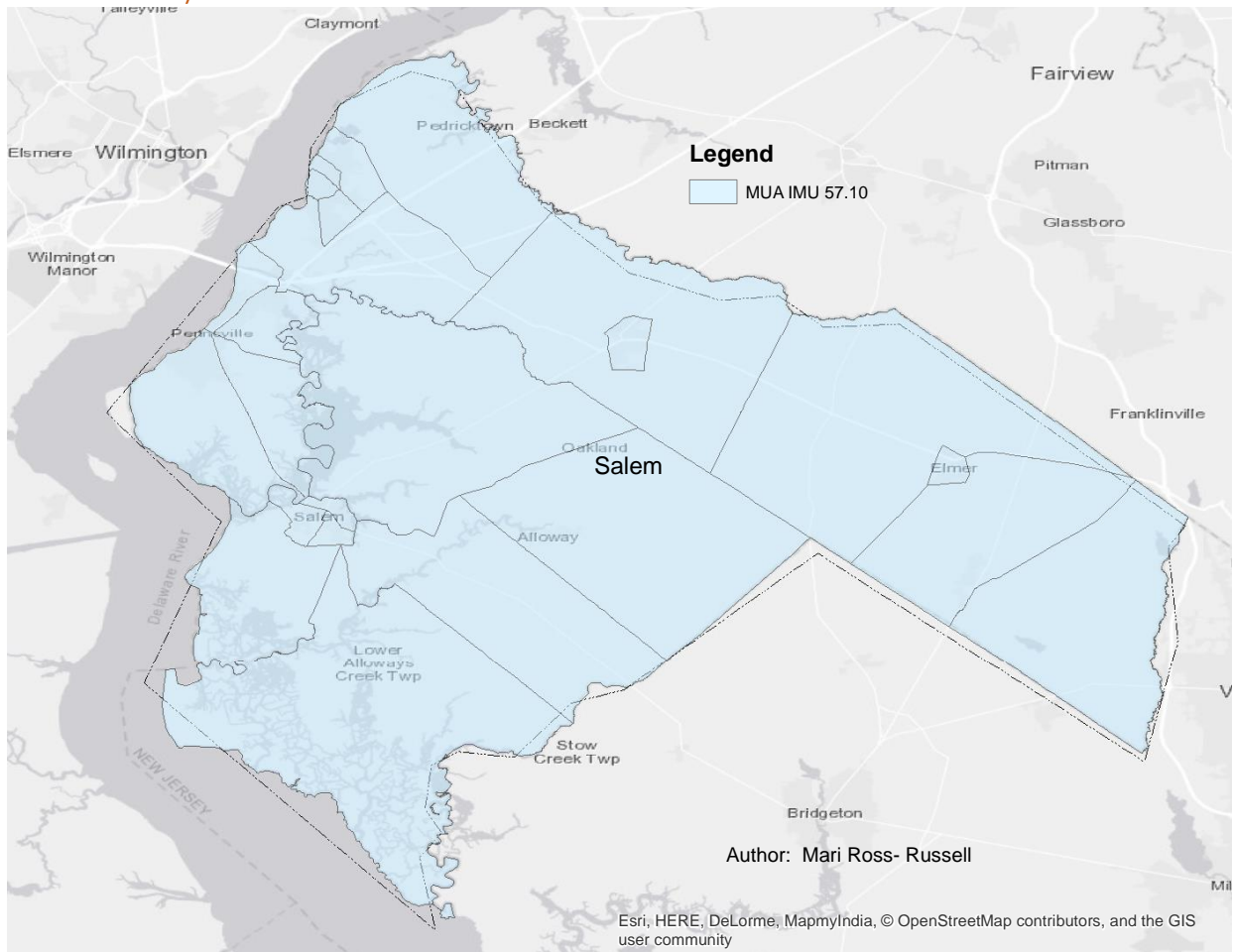
Various sections of Camden City in Camden County are considered a medically underserved area, as seen in Figure A9. The geographic area identified has an index of medical underservice score of 48.40.

Figure A10: Medically Underserved Population, Low Income Population, Index of Medical Underservice Score = 59.20 Gloucester County



Figure A10 covers a low income medically underserved population in Gloucester County within parts of Glassboro. The IMU score for this location is 59.20 out of 100.

Figure A11: Medically Underserved Area, Index of Medical Underservice Score = 57.10
Salem County



The entire county of Salem in Southern New Jersey is considered a medically underserved area with a score of 57.10.

Non-Exhaustive List of Public and Privately Funded Provider Agencies

A list of providers by service for both publicly and privately funded sites is displayed below. This is a non-exhaustive compilation with the name of the organization/agency and its website. More detailed information about provider services is available at the AIDS Library of Philadelphia FIGHT, <http://www.aidslibrary.org/our-publications/resource-guide-publications/> and through the Choice Information Hotline, <http://www.choice-philadelphia.org/>. All providers with services contracted through the AIDS Activities Coordinating Office are in **bold and italics**.

Ambulatory Care

11TH STREET FAMILY HEALTH SERVICES OF DREXEL UNIVERSITY	www.drexel.edu/11thStreet
<i>ABBOTTSFORD-FALLS FAMILY PRACTICE</i>	<i>www.fpcn.com</i>
<i>AIDS CARE GROUP- EDGMONT AVE</i>	<i>www.aidscaregroup.org</i>
<i>AIDS CARE GROUP-SHARON HILL</i>	<i>www.aidscaregroup.org</i>
<i>ALBERT EINSTEIN MEDICAL CENTER</i>	<i>http://www.einstein.edu/</i>
<i>ALBERT EINSTEIN MEDICAL CENTER IMMUNODEFICIENCY CENTER</i>	<i>http://www.einstein.edu/</i>
ARIA HEALTH HOSPITAL (FORMERLY FRANKFORD HOSPITAL)	www.ariahealth.org/
ASOCIACION PUERTORRIQUENOS EN MARCHA - COMMUNITY HEALTH CLINIC	www.apmphila.org
BERGEN LANNING HEALTH CENTER	http://health-centers.healthgrove.com/l/2105/Bergen-Lanning-Health-Center
BRANDYWINE VALLEY INFECTIOUS DISEASES	http://doctor.webmd.com/practice/brandywine-valley-infectious-disease-associates-56300bc8-4703-e211-a42b-001f29e3eb44-overview
BROAD STREET HEALTH CENTER (SPECTRUM HEALTH SERVICES)	http://www.spectrumhs.org/
BRYN MAWR FAMILY PRACTICE	www.mainlinehealth.org
BRYN MAWR HOSPITAL (JEFFERSON HEALTH CARE)	www.mainlinehealth.org
BURLINGTON COUNTY HEALTH DEPT. @ RAPHAEL MEADOW	http://www.co.burlington.nj.us/290/Health-Department
CAM CARE PEDIATRICS	https://www.camcare.net/pediatric/
<i>CHESPENN HEALTH SERVICES</i>	<i>www.chespenn.com</i>
CHILDREN'S HOSPITAL OF PHILADELPHIA - COBBS CREEK	www.chop.edu
<i>CHILDREN'S HOSPITAL OF PHILADELPHIA - SPECIAL IMMUNOLOGY FAMILY CARE CENTER</i>	<i>www.chop.edu</i>
<i>CHILDREN'S HOSPITAL OF PHILADELPHIA ADOLESCENT CLINIC</i>	<i>www.chop.edu/centers-programs/adolescent-initiative</i>
COATESVILLE VA MEDICAL CENTER	www.coatesville.va.gov
<i>CONGRESO DE LATINOS UNIDOS, INC.</i>	<i>http://www.congreso.net/</i>
COOPER AT BMA/WILLINGBORO	www.cooperhealth.org
<i>COOPER UNIVERSITY HOSPITAL REGIONAL FAMILY HIV TREATMENT CENTER</i>	<i>www.cooperhealth.org</i>
CROZER-CHESTER MEDICAL CENTER	www.crozer.org
DELAWARE CO. MEMORIAL HOSPITAL	www.crozer.org
EINSTEIN MEDICAL CENTER MONTGOMERY	www.einstein.edu

EINSTEIN MEDICAL CENTER: IMMUNODEFICIENCY CLINIC	www.einstein.edu
EPISCOPAL HOSPITAL	http://episcopal.templehealth.org/
ESPERANZA HEALTH CENTER – HUNTING PARK CLINIC	www.esperanzahealthcenter.org
ESPERANZA HEALTH CENTER – 5TH STREET CLINIC	www.esperanzahealthcenter.org
ESPERANZA HEALTH CENTER – KENSINGTON CLINIC	www.esperanzahealthcenter.org
FAIRMOUNT PRIMARY CARE CENTER	www.dvch.org
FAMILY PRACTICE & COUNSELING NETWORK HEALTH ANNEX	www.fpcn.com
GIRARD MEDICAL CENTER	www.nphs.com/girard_home.html
GPHA-4 TH STREET MEDICAL SUITE	http://www.gphainc.org/sitesMap.asp
GPHA-HUNTING PARK HEALTH CENTER	http://www.gphainc.org/sitesMap.asp
GPHA-SOUTH PHILADELPHIA HEALTH CENTER	http://www.gphainc.org/sitesMap.asp
GPHA-SOUTHEAST HEALTH CENTER	http://www.gphainc.org/sitesMap.asp
GPHA-WILSON PARK MEDICAL CENTER	http://www.gphainc.org/sitesMap.asp
GPHA-WOODLAND AVE	http://www.gphainc.org/sitesMap.asp
HADDINGTON HEALTH CENTER - SPECTRUM HEALTH SERVICES	http://www.spectrumhs.org/
HOSPITAL OF THE UPENN/ MACGREGOR INFECTIOUS DISEASE CLINIC	www.pennmedicine.org
J. EDWIN WOOD CLINIC	http://www.pennmedicine.org/providers/practice/j-edwin-wood-clinic
JEFFERSON UNIVERSITY HOSPITAL METHODIST DIVISION	http://hospitals.jefferson.edu/find-a-location/locations/methodist-hospital/
JOHN BELL HEALTH CENTER	www.fight.org
JONATHAN LAX TREATMENT CENTER	www.fight.org
KENNEDY HEALTH SYSTEMS-GARDEN STATE INFECTIOUS DISEASE ASSOCIATES, P.A.	http://www.kennedyhealth.org/
KENNEDY MEMORIAL HOSPITAL - WASHINGTON TOWNSHIP	http://www.kennedyhealth.org/
KENSINGTON HOSPITAL	http://www.philadelphia.pa.networkofcare.org/mh/services/medicare-hospital-detail.aspx?pn=390025
KENSINGTON HOSPITAL-ERIE CLINIC	http://www.philadelphia.pa.networkofcare.org/mh/services/medicare-hospital-detail.aspx?pn=390025
MARIA DE LOS SANTOS HEALTH CENTER	http://dvch.org/locations/maria-de-los-santos-health-center/
MAZZONI CENTER	www.mazzonicenter.org
MAZZONI CENTER FAMILY AND COMMUNITY MEDICINE	www.mazzonicenter.org/programs/medical-care
MEMORIAL HOSPITAL OF SALEM COUNTY-CLINIC	http://www.mhschealth.com/The-Memorial-Hospital-of-Salem-County/home.aspx
MERCY FITZGERALD HOSPITAL - FRIDAY CLINIC	http://www.mercyhealth.org/
MERCY HOSPITAL HIV SERVICES	www.mercyhealth.org/mercyphiladelphia
NORRISTOWN REGIONAL HEALTH CENTER	www.dvch.org
OUR LADY OF LOURDES MEDICAL CENTER	https://www.lourdesnet.org/
PARTNERSHIP COMPREHENSIVE CARE PRACTICE	http://www.drexelmedicine.org/patient-services/infectious-diseases/our-locations/
PDPH HEALTH CARE CENTER #10	http://www.phila.gov/health/ambulatoryhealth/hc10.html

PDPH HEALTH CARE CENTER #2	http://www.phila.gov/health/ambulatoryhealth/hc2.html
PDPH HEALTH CARE CENTER #3	http://www.phila.gov/health/ambulatoryhealth/hc3.html
PDPH HEALTH CARE CENTER #4	http://www.phila.gov/health/ambulatoryhealth/hc4.html
PDPH HEALTH CARE CENTER #5	http://www.phila.gov/health/ambulatoryhealth/hc5.html
PDPH HEALTH CARE CENTER #6	http://www.phila.gov/health/ambulatoryhealth/hc6.html
PDPH HEALTH CARE CENTER #9	http://www.phila.gov/health/ambulatoryhealth/hc9.html
PEDIATRIC INFECTIOUS DISEASE CENTER @ COOPER	http://www.cooperhealth.org/departments-programs/pediatric-infectious-diseases
PENN COMMUNITY PRACTICE AT PRESBYTERIAN	http://www.pennmedicine.org/penn-presbyterian-medical-center/services-programs.html
PHILADELPHIA DEPARTMENT OF PUBLIC HEALTH	http://www.phila.gov/health/
PHMC CARE CLINIC	http://www.phmc.org/site/index.php?option=com_content&view=article&id=375..
PUENTOS DE SALUD CLINIC	http://puentesdesalud.org/
QCHC MEADE FAMILY HEALTH CENTER	http://www.qchc.org/AboutUs.htm
QCHC VAUX FAMILY HEALTH CENTER	http://www.qchc.org/AboutUs.htm
QCHC-COOKE FAMILY HEALTH CENTER	http://www.qchc.org/AboutUs.htm
QUALITY COMMUNITY HEALTH CARE	http://www.qchc.org/index.htm
SOUTH JERSEY FAMILY MEDICAL CENTER	http://www.sjfmc.org/
SPECTRUM COMMUNITY HEALTH CENTER - BROAD ST HEALTH CENTER	http://www.spectrumhs.org/
SPECTRUM COMMUNITY HEALTH CENTER - 5201 HAVERFORD AVE	http://www.spectrumhs.org/
ST. CHRISTOPHER'S HOSPITAL FOR CHILDREN	http://www.scfchildren.org/dorothy-mann-center-for-pediatric-and-adolescent-hiv-2
STRAWBERRY MANSION HEALTH CENTER	http://www.phila.gov/health/ambulatoryhealth/hcStrawberry.html
TEMPLE UNIVERSITY COMPREHENSIVE HIV PROGRAM	http://www.temple.edu/medicine/departments_centers/clinical_departments/medicine_gim_hiv.htm
THOMAS JEFFERSON UNIVERSITY INFECTIOUS DISEASES	http://hospitals.jefferson.edu/departments-and-services/infectious-diseases/
URBAN SOLUTIONS	http://myuhi.org/
VALLEY FORGE MEDICAL CENTER AND HOSPITAL	http://www.vfmc.net/index.html
VETERANS AFFAIRS MEDICAL CENTER - ID CLINIC	http://www.philadelphia.va.gov/

Case Management

ACLAMO FAMILY CENTERS OF MONTGOMERY COUNTY	http://www.aclamo.org/
ACT ONE (ACHIEVEMENT THROUGH COUNSELING AND TREATMENT)	https://jevshumanservices.org/programs/substance-abuse-treatment/
ACT TWO (ACHIEVEMENT THROUGH COUNSELING AND TREATMENT)	www.jevshumanservices.org
ACTION AIDS- 1026 ARCH STREET	www.actionaids.org
ACTION AIDS- DELAWARE COUNTY OFFICE	www.actionaids.org
ACTIONAIDS-WEST	www.actionaids.org
AFRICAN FAMILY HEALTH ORGANIZATION (AFAHO)	http://www.afaho.net/
AIDS CARE GROUP	www.aidscaregroup.org
AIDS COMMUNITY CARE ALTERNATIVES PROGRAM (ACCAP)	http://www.state.nj.us/humanservices/dds/ohcs/waiver/accap/
ASOCIACION DE PUERTORRIQUENOS EN MARCHA- MAIN OFFICE	www.apmphila.org
ATTIC YOUTH CENTER	www.atticyouthcenter.org
BEBASHI	www.bebashi.org
BERGEN LANNING HEALTH CENTER	http://health-centers.healthgrove.com/l/2105/Bergen-Lanning-Health-Center
BLACK WOMEN'S HEALTH ALLIANCE	www.pbwha.org
BURLINGTON COUNTY HEALTH DEPT. @ RAPHAEL MEADOW	http://www.co.burlington.nj.us/290/Health-Department
CAMDEN COUNTY DIVISION OF HEALTH - SPECIAL CHILD HEALTH SERVICES	http://www.state.nj.us/health/fhs/sch/index.shtml
CHILDREN'S HOSPITAL OF PHILADELPHIA - COBBS CREEK	www.chop.edu
CHILDREN'S HOSPITAL OF PHILADELPHIA - SPECIAL IMMUNOLOGY FAMILY CARE CENTER	www.chop.edu
CHILDREN'S HOSPITAL OF PHILADELPHIA ADOLESCENT CLINIC	www.chop.edu/centers-programs/adolescent-initiative
CONGRESO DE LATINOS UNIDOS, INC.	http://www.congreso.net/
COOPER EIP	www.cooperhealth.org
COOPER UNIVERSITY HOSPITAL REGIONAL FAMILY HIV TREATMENT CENTER	www.cooperhealth.org
COVENANT HOUSE HEALTH SERVICES	www.covenanthousepa.org
DELAWARE CO. OFFICE OF BEHAVIORAL HEALTH	http://www.delcohsa.org/behavioralhealth.html
DELAWARE COUNTY DEPARTMENT OF HEALTH	www.co.delaware.pa.us/intercommunity
EASTON AREA NEIGHBORHOOD CENTERS, INC	http://www.eastonareaneighborhoodcenter.org/Services.html
EPISCOPAL HOSPITAL	
ESPERANZA HEALTH CENTER – HUNTING PARK CLINIC	www.esperanzahealthcenter.org
ESPERANZA HEALTH CENTER – 5 TH STREET CLINIC	www.esperanzahealthcenter.org
ESPERANZA HEALTH CENTER – KENSINGTON CLINIC	www.esperanzahealthcenter.org
FAMILY AND COMMUNITY SERVICE OF DELAWARE COUNTY	www.fcsc.org
FAMILY PRACTICE & COUNSELING NETWORK HEALTH ANNEX	www.fpcn.com
FAMILY SERVICE ASSOCIATION OF BUCKS COUNTY	www.fsabc.org
FAMILY SERVICE OF CHESTER COUNTY	www.familyservice.us

FAMILY SERVICES OF MONTGOMERY COUNTY	www.fsmontco.org
GAY & LESBIAN LATINO AIDS EDUCATION INITIATIVE (GALAEI) PROJECT	www.galaei.org
GOOD SHEPARD PROGRAM OF ST. JOHNS HOSPICE	http://saintjohnshospice.org/
GPHA-4 TH STREET MEDICAL SUITE	http://www.gphainc.org/sitesMap.asp
GPHA-HUNTING PARK HEALTH CENTER	http://www.gphainc.org/sitesMap.asp
GPHA-SOUTHEAST HEALTH CENTER	http://www.gphainc.org/sitesMap.asp
GPHA-WILSON PARK MEDICAL CENTER	http://www.gphainc.org/sitesMap.asp
GPHA-WOODLAND AVE	http://www.gphainc.org/sitesMap.asp
HADDINGTON HEALTH CENTER - SPECTRUM HEALTH SERVICES	http://www.spectrumhs.org/
HEALTHSTART - MEMORIAL HOSPITAL OF SALEM COUNTY	http://www.mhschealth.com/The-Memorial-Hospital-of-Salem-County/home.aspx
HOLCOMB BEHAVIORAL HEALTH SYSTEMS	http://www.chimes.org/holcomb/
HOSPITAL OF THE UPENN/ MACGREGOR INFECTIOUS DISEASE CLINIC	www.pennmedicine.org
JONATHAN LAX TREATMENT CENTER	www.fight.org
KENNEDY HEALTH SYSTEMS-GARDEN STATE INFECTIOUS DISEASE ASSOCIATES, P.A.	http://www.kennedyhealth.org/
KENNEDY HEALTH SYSTEMS-RAPHAEL MEADOW CENTER	http://www.kennedyhealth.org/
KENSINGTON HOSPITAL	http://www.philadelphia.pa.networkofcare.org/mh/services/medicare-hospital-detail.aspx?pn=390025
MARIA DE LOS SANTOS HEALTH CENTER	http://dvch.org/locations/maria-de-los-santos-health-center/
MAZZONI CENTER	www.mazzonicenter.org
ODAAT, NORTH	http://www.uac.org/partners/one-day-time-odaat
PARTNERSHIP COMPREHENSIVE CARE PRACTICE	http://www.drexelmedicine.org/patient-services/infectious-diseases/our-locations/
PDPH HEALTH CENTER 10	http://www.phila.gov/health/ambulatoryhealth/hc10.html
PDPH HEALTH CENTER 2	http://www.phila.gov/health/ambulatoryhealth/hc2.html
PDPH HEALTH CENTER 3	http://www.phila.gov/health/ambulatoryhealth/hc3.html
PDPH HEALTH CENTER 4	http://www.phila.gov/health/ambulatoryhealth/hc4.html
PDPH HEALTH CENTER 5	http://www.phila.gov/health/ambulatoryhealth/hc5.html
PDPH HEALTH CENTER 6	http://www.phila.gov/health/ambulatoryhealth/hc6.html
PDPH HEALTH CENTER 7	http://www.phila.gov/health/ambulatoryhealth/hc9.html
PHILADELPHIA FIGHT	http://fight.org/
PHMC CARE CLINIC	http://www.phmc.org/site/index.php?option=com_content&view=article&id=375...
PREVENTION POINT PHILADELPHIA	http://ppponline.org/
PROJECT H.O.M.E.	https://projecthome.org/
PUERTO RICAN ACTION COMMITTEE	http://pracnj.com/pracabout.html
PUERTO RICAN UNITY FOR PROGRESS	http://www.prupnj.org/charity-organization-contact-us

QUALITY COMMUNITY HEALTH CARE	http://www.qchc.org/index.htm
SALEM COUNTY SOCIAL SERVICES	http://health.salemcountynj.gov/
ST. CHRISTOPHER'S HOSPITAL FOR CHILDREN	http://www.scfchildren.org/dorothy-mann-center-for-pediatric-and-adolescent-hiv-2
ST. JOHN'S HOSPICE	http://saintjohnshospice.org/
STRAWBERRY MANSION HEALTH CENTER	http://www.phila.gov/health/ambulatoryhealth/hcStrawberry.html
TEMPLE UNIVERSITY COMPREHENSIVE HIV PROGRAM	http://www.temple.edu/medicine/departments_centers/clinical_departments/medicine_gim_hiv.htm
THE ATTIC YOUTH CENTER	https://www.atticyouthcenter.org/
URBAN SOLUTIONS	http://myuhi.org/
VALLEY FORGE MEDICAL CENTER AND HOSPITAL	http://www.vfmc.net/index.html
VETERANS AFFAIRS MEDICAL CENTER –ID CLINIC	www.philadelphia.va.gov
VETERANS AFFAIRS MEDICAL CENTER –ID CLINIC	www.philadelphia.va.gov
WOMEN'S CARE CENTER	http://www.cooperhealth.org/departments-programs/ripa-center-womens-health-wellness
WOMEN'S INSTITUTE FOR FAMILY HEALTH	http://www.wifamilyhealth.org/

Condom Distribution

CROZER KEYSTONE HEALTH SYSTEMS	www.crozer.org
DELAWARE VALLEY COMMUNITY HEALTH	www.dvch.org
ESPERANZA HEALTH CENTER – HUNTING PARK CLINIC	www.esperanzahealthcenter.org
ESPERANZA HEALTH CENTER – 5TH STREET CLINIC	www.esperanzahealthcenter.org
ESPERANZA HEALTH CENTER – KENSINGTON CLINIC	www.esperanzahealthcenter.org
GALAEI	www.galaei.org
PDPH HEALTH CENTER #1	http://www.phila.gov/health/ambulatoryhealth/hc1.html
QUALITY COMMUNITY HEALTH CARE - COOKE FAMILY HEALTH CENTER	http://www.qchc.org/AboutUs.htm
QUALITY COMMUNITY HEALTH CARE - MEADE FAMILY HEALTH CENTER	http://www.qchc.org/AboutUs.htm
QUALITY COMMUNITY HEALTH CARE- 2501 LEHIGH AVE	http://www.qchc.org/AboutUs.htm
SPECTRUM COMMUNITY HEALTH CENTER - BROAD ST HEALTH CENTER	http://www.spectrumhs.org/
SPECTRUM COMMUNITY HEALTH CENTER - 5201 HAVERFORD AVE	http://www.spectrumhs.org/

Dental Care

11TH STREET FAMILY HEALTH SERVICES OF DREXEL UNIVERSITY	www.drexel.edu/11thStreet
ABBOTSFORD-FALLS FAMILY PRACTICE	www.fpcn.com
AIDS CARE GROUP	www.aidscaregroup.org
CHESPENN HEALTH SERVICES	www.chespenn.com
DELAWARE VALLEY COMMUNITY HEALTH INC.- FAIRMOUNT HEALTH CENTER	www.dvch.org
ESPERANZA HEALTH CENTER - KENSINGTON CLINIC	www.esperanzahealthcenter.org

FAIRMOUNT PRIMARY CARE CENTER	www.dvch.org
FAMILY PRACTICE & COUNSELING NETWORK HEALTH ANNEX	www.fpcn.com
FAMILY SERVICE ASSOCIATION OF BUCKS COUNTY	www.fsabc.org
GPHA-DENTAL AND BEHAVIORAL HEALTHCARE	http://www.gphainc.org/sitesMap.asp
GPHA-HUNTING PARK HEALTH CENTER	http://www.gphainc.org/sitesMap.asp
GPHA-SNYDER AVENUE DENTAL CENTER	http://www.gphainc.org/sitesMap.asp
GPHA-SOUTHEAST HEALTH CENTER	http://www.gphainc.org/sitesMap.asp
GPHA-WILSON PARK MEDICAL CENTER	http://www.gphainc.org/sitesMap.asp
MARIA DE LOS SANTOS HEALTH CENTER	http://dvch.org/locations/maria-de-los-santos-health-center/
PDPH HEALTH CENTER 10	http://www.phila.gov/health/ambulatoryhealth/hc10.html
PDPH HEALTH CENTER 2	http://www.phila.gov/health/ambulatoryhealth/hc2.html
PDPH HEALTH CENTER 3	http://www.phila.gov/health/ambulatoryhealth/hc3.html
PDPH HEALTH CENTER 4	http://www.phila.gov/health/ambulatoryhealth/hc4.html
PDPH HEALTH CENTER 5	http://www.phila.gov/health/ambulatoryhealth/hc5.html
PDPH HEALTH CENTER 6	http://www.phila.gov/health/ambulatoryhealth/hc6.html
PDPH HEALTH CENTER 7	http://www.phila.gov/health/ambulatoryhealth/hc9.html
QUALITY COMMUNITY HEALTH CARE	http://www.qchc.org/index.htm
SOUTH JERSEY FAMILY MEDICAL CENTER	
STRAWBERRY MANSION HEALTH CENTER	http://www.phila.gov/health/ambulatoryhealth/hcStrawberry.html
TEMPLE UNIVERSITY KORNBERG SCHOOL OF DENTISTRY	http://dentistry.temple.edu/
UNIVERSITY DENTAL CENTER AT SOMERDALE	http://sdm.rutgers.edu/about/admin_extramural.htm
UNIVERSITY OF PENNSYLVANIA SCHOOL OF DENTISTRY	www.pennmedicine.org

Direct Emergency Financial Assistance

PUBLIC HEALTH MANAGEMENT CORPORATION	www.phmc.org
UTILITY EMERGENCY SERVICES FUND	www.uesfacts.org/

Faith-based

ARCH STREET UNITED METHODIST CHURCH	www.archstreetumc.org
BRIGHT HOPE BAPTIST CHURCH	www.brighthopebaptist.org
BROAD STREET MINISTRY	www.broadstreetministry.org
CALVARY UNITED METHODIST CHURCH	www.allmeansall.org
CHURCH OF THE ADVOCATE	www.churchoftheadvocate.org
ENON TABERNACLE BAPTIST CHURCH	www.enontab.org
FIRST UNITED METHODIST CHURCH OF GERMANTOWN	http://fumcog.org/

GERMANTOWN MENNONITE CHURCH	www.germantownmennonite.org
SAINT LUKE'S CHURCH	www.stlukeandtheepiphany.org
SAINT MARY OF GRACE PARISH	www.inclusivecatholics.org
SAINT MICHAEL'S LUTHERAN CHURCH	http://www.stmichaelsgermantown.org/

Federally Qualified Health Centers

CAMCARE HEALTH CORP - PAULSBORO	http://www.camcare.net/locations/
CAMCARE HEALTH CORPORATION CLEMENTON	http://www.camcare.net/locations/
CAMCARE HEALTH CORPORATION North	http://www.camcare.net/locations/
CAMCARE HEALTH CORPORATION South	http://www.camcare.net/locations/
CAMCARE HEALTH East	http://www.camcare.net/locations/
CAMCARE-ODESSA PAULK-JONES HEALTH CENTER	http://www.camcare.net/locations/
COATESVILLE FAMILY HEALTH CENTER	http://www.chespenn.org/
COMMUNITY HEALTH AND DENTAL CARE	https://ch-dc.org/
COMMUNITY HEALTH AND DENTAL CARE, INC	http://www.ch-dc.org
COMPLETECARE Dental PROFESSIONALS-Glassboro	http://completecarenj.org/
COMPLETECARE HEALTH NETWORK-WOODBURY	http://completecarenj.org/
COMPLETECARE MEDICAL PROFESSIONALS	http://completecarenj.org/
COVENANT HOUSE HEALTH SERVICES	https://www.covenanthousepa.org/
DVCH - PARKVIEW OB/GYN	http://dvch.org
EASTSIDE MEDICAL CENTER	http://lecomhealth.com/
FAIRMOUNT PRIMARY CARE CENTER AT HORIZON HOUSE	http://dvch.org
FAIRMOUNT PRIMARY CARE CT AT NHS DELAWARE COUNTY	http://dvch.org
FRANKFORD AVE HLTH CTR	http://www.gphainc.org/
GATEWAY HEALTH CENTER	http://www.camcare.net/locations/
GPHA - CARL MOORE HEALTH CENTER	http://www.gphainc.org/
GPHA - INC MEDICAL SUITE AT TEMPLES DENTAL SCHOOL	http://gphainc.org
GPHA AL-ASSIST BEHAVIORAL HEALTH	http://www.gphainc.org
GPHA CHINATOWN MEDICAL SERVICES	http://www.gphainc.org
LA COMUNIDAD HISPANA, INC	https://lacomunidadhispana.org
LA COMUNIDAD HISPANA, INC	https://lacomunidadhispana.org/
MARY HOWARD HEALTH CENTER	http://www.phmchealthnetwork.org/2013-09-17-02-33-00
MT PLEASANT MEDICAL CENTER	https://www.covenanthousepa.org/
PHILADELPHIA HEALTH MANAGEMENT CORP	http://www.phmc.org
PHMC HEALTH CENTER AT TEMPLE	http://www.phmchealthnetwork.org
PHMC HEALTH CONNECTION	http://www.phmchealthnetwork.org
PHMC-CONGRESO HEALTH CENTER	http://www.phmchealthnetwork.org
PROJECT HOME	https://www.projecthome.org
PROJECT HOME - PATHWAYS TO HOUSING	https://www.projecthome.org/
PROJECT HOPE INC	http://projecthopecamden.org/location/

PROJECT HOPE INC WEST STREET HEALTH CENTER	http://projecthopecamden.org
RESOURCES FOR HUMAN DEVELOPMENT-THE HEALTH ANNEX	https://www.rhd.org
RHD ABBOTTSFORD COMM HEALTH CENTER	https://www.fpcn.com/
RHD-11TH ST FAMILY HEALTH SERVICES OF DREXEL UNIV	https://www.rhd.org
RISING SUN HEALTH CENTER	http://www.phmchealthnetwork.org/2013-09-17-02-29-05
SAYRE HEALTH CENTER	http://www.sayrehealth.org/
SOUTHEAST HEALTH CENTER	http://gphainc.org/index.asp
SOUTHERN JERSEY FAMILY MEDICAL CENTERS Buttonwood	http://www.sjfmc.org/locations/buttonwood-medical-and-dental-center
SOUTHERN JERSEY FAMILY MEDICAL CENTERS INC Burlington City	http://www.sjfmc.org/locations/burlington-city-health-center
SOUTHERN JERSEY FAMILY MEDICAL CENTERS INC Salem Center	http://www.sjfmc.org/locations/salem-center
YHEP HEALTH CENTER	https://fight.org/programs/y-hep-health-center/

Food Bank, Home Delivered and Congregate Meals

AIDS CARE GROUP	www.aidscaregroup.org
APOSTLES' LUTHERAN CHURCH, CARING CIRCLE PROGRAM	http://www.gloucestercountynj.gov/depts/s/boardss/emmerfp.asp
BEBASHI	www.bebashi.org
BROAD STREET HEALTH CENTER (SPECTRUM HEALTH SERVICES)	http://www.spectrumhs.org/
CATHOLIC CHARITIES	http://catholiccharitiescamden.org/basicneeds/
CONGRESO DE LATINOS UNIDOS, INC.	http://www.congreso.net/
COVENANT HOUSE HEALTH SERVICES	www.covenanthousepa.org
EASTON AREA NEIGHBORHOOD CENTERS, INC.	http://www.eastonareaneighborhoodcenter.org/Services.html
FOOD RESOURCE GUIDE	www.pcacares.org/foodresources
FOOD STAMP HOTLINE/ GREATER PHILADELPHIA COALITION AGAINST HUNGER	www.hungercoalition.org
FOOD STAMP HOTLINE/ GREATER PHILADELPHIA COALITION AGAINST HUNGER	www.hungercoalition.org
GLOUCESTER COUNTY DIVISION OF SOCIAL SERVICES	http://www.gloucestercountynj.gov/depts/s/boardss/default.asp
JEWISH FAMILY AND CHILDREN'S SERVICES	https://www.jfcsphilly.org/main-home-page/children-teens-families/financial-assistance/
MANNA- METROPOLITAN AREA NEIGHBORHOOD NUTRITION ALLIANCE	http://www.mannapa.org/
MAZZONI CENTER	www.mazzonicenter.org
MEALS ON WHEELS OF SALEM COUNTY, INC.	http://www.scmealsonwheels.org/services/
ODAAT, NORTH	http://www.uac.org/partners/one-day-time-odaat
PUBLIC HEALTH MANAGEMENT CORP. – FOOD VOUCHERS	www.Phmc.org
PUERTO RICAN ACTION COMMITTEE	http://www.pracnj.com/pracservices.html
SALEM COUNTY BOARD OF SOCIAL SERVICES	http://www.scbssnj.org/
SPIRIT LIFE FELLOWSHIP/OASIS KITCHEN	http://spiritlifefellowship.net/oasis-kitchen.php

ST. ANDREW THE APOSTLE RC CHURCH	http://churchofsaintandrews.org/100
ST. JOHN'S HOSPICE	http://saintjohnshospice.org/
ST. VINCENT DEPAUL	http://www.vincentdepaul.org/index.cfm?fuseaction=feature.display&feature_id=15
VOLUNTEERS OF AMERICA HOMELESS PREVENTION	http://www.voadv.org/
WOMEN'S INSTITUTE FOR FAMILY HEALTH	http://www.wifamilyhealth.org/

General Information, Prevention Education & Referral Services

ACCESS MATTERS	www.accessmatters.org
ACLAMO FAMILY CENTERS	http://www.aclamo.org/
ACTION AIDS- 1026 ARCH STREET	www.actionaids.org
AIDS ACTIVITIES COORDINATING OFFICE	www.phila.gov/health/aaco/index.html
AIDS ACTIVITIES COORDINATING OFFICE	www.phila.gov/health/aaco/index.html
AIDS LAW PROJECT IN PENNSYLVANIA	www.aidslawpa.org
AIDS LIBRARY	www.aidslibrary.org/
AIDS TREATMENT NEWS	www.aidsnews.org
AMERICAN RED CROSS OF SOUTHEASTERN PA CHAPTER	www.redcross.org/pa/philadelphia
ASPIRA, INC. OF PENNSYLVANIA	www.aspirapennsylvania.org/
ATTIC YOUTH CENTER	www.atticyouthcenter.org
BEBASHI	www.bebashi.org
BUCKS COUNTY HEALTH DEPARTMENT: DOYLESTOWN	www.buckscounty.org
BUCKS COUNTY HEALTH DEPARTMENT: LEVITTOWN	www.buckscounty.org
BURLINGTON COUNTY BOARD OF SOCIAL SERVICES	http://www.bcbss.org/
BURLINGTON COUNTY COMMUNITY ACTION PROGRAM	http://www.bccap.org/
CAMDEN AREA HEALTH EDUCATION CENTER (AHEC)	www.camden-ahec.org
CATA - EL COMITE DE APOYO A LOS	http://cata-farmworkers.org/
CATHOLIC CHARITIES - FAMILY & COMMUNITY CENTER	http://catholiccharitiescamden.org/
CATHOLIC SOCIAL SERVICES- PHILADELPHIA	www.css-phl.org
CENTER FOR FAMILY SERVICES- FAMILY SUPPORT CENTER-GLOUCESTER	http://www.centerffs.org/
CHESTER COUNTY HEALTH DEPARTMENT	www.chesco.org/health
CHILDREN'S HOSPITAL OF PHILADELPHIA - SPECIAL IMMUNOLOGY FAMILY CARE CENTER	www.chop.edu
CHILDREN'S HOSPITAL OF PHILADELPHIA ADOLESCENT CLINIC	www.chop.edu/centers-programs/adolescent-initiative
CHOICE	www.choice-phila.org
COATESVILLE VA MEDICAL CENTER	www.coatesville.va.gov
COLOURS	www.coloursorganization.org
COMMUNITY HEALTH AND EDUCATION OUTREACH (CHEO)	www.cheoinc.com
CONTACT OF BURLINGTON COUNTY	www.contactburlco.org
CROSSROADS PROGRAMS	http://www.crossroadsprograms.org/about_crossroads/our-programs.html
DELAWARE COUNTY DEPARTMENT OF HEALTH	http://www.co.delaware.pa.us/intercommunity
EASTON AREA NEIGHBORHOOD CENTERS, INC	http://www.eastonareaneighborhoodcenter.org/Services.html
FAM CARE, INC.	http://famcare8.wwwssr10.supercp.com/services/

FAMILY SERVICE OF CHESTER COUNTY	www.familyservice.us
FAMILY SERVICES OF MONTGOMERY COUNTY	www.fsmontco.org
GAY & LESBIAN LATINO AIDS EDUCATION INITIATIVE (GALAEI) PROJECT	www.galaei.org
GLOUCESTER COUNTY DIVISION OF SOCIAL SERVICES	http://www.gloucestercountynj.gov/depts/s/boardss/default.asp
HISPANIC FAMILY CENTER OF SOUTHERN NJ, INC.	http://www.hispanicfamilycenter.com/
HIV/AIDS FACT LINE -CHOICE	www.choice-phila.org
JEWISH FAMILY AND CHILDREN'S SERVICES	https://www.jfcsphilly.org/main-home-page/children-teens-families/financial-assistance/
JEWISH FAMILY AND CHILDREN'S SERVICES	https://www.jfcsphilly.org/main-home-page/children-teens-families/family-life-educational-programs-workshops/
MAZZONI CENTER	www.mazzonicenter.org
PHILADELPHIA FIGHT	http://fight.org/
PLANNED PARENTHOOD OF CHESTER COUNTY	https://www.plannedparenthood.org/health-center/pennsylvania/west-chester/19382/west-chester-health-center-3356-91460
PREVENTION PLUS OF BURLINGTON COUNTY	http://www.prevplus.org/
PUERTO RICAN ACTION COMMITTEE	http://www.pracnj.com/pracservices.html
PUERTO RICAN UNITY FOR PROGRESS	http://www.prupnj.org/charity-organization-contact-us
SALEM COUNTY OFFICE FOR THE DISABLED	http://www.salemcountynj.gov/departments/office-of-disability-services/
SALEM COUNTY SOCIAL SERVICES	http://health.salemcountynj.gov/
ST. CHRISTOPHER'S HOSPITAL FOR CHILDREN	http://www.scfchildren.org/dorothy-mann-center-for-pediatric-and-adolescent-hiv-2
WOMEN'S CARE CENTER	http://www.cooperhealth.org/departments-programs/ripa-center-womens-health-wellness
YOUTH OUTREACH ADOLESCENT COMMUNITY AWARENESS PROGRAM (YOACAP)	http://www.uac.org/partners/youth-outreach-adolescent-community-awareness-program-yo-acap

HIV Testing

11TH STREET FAMILY HEALTH SERVICES OF DREXEL UNIVERSITY	www.drexel.edu/11thStreet
AACO PARTNER SERVICES/PHILADELPHIA DEPARTMENT OF PUBLIC HEALTH (PDPH)	http://www.phila.gov/health/aaco/Prevention.html
ABBOTSFORD-FALLS FAMILY PRACTICE	www.fpcn.com
ACCESS MATTERS	www.accessmatters.org
ACTIONAIDS	www.actionaids.org
ACTIONAIDS- NORTH – CASA NUEVA	www.actionaids.org
ACTIONAIDS- WASHINGTON WEST PROJECT	www.actionaids.org
AFRICAN FAMILY HEALTH ORGANIZATION (AFAHO)	www.afaho.net
AIDS CARE GROUP - SHARON HILL	www.aidscaregroup.org
AIDS CARE GROUP - EDMONT AVE	www.aidscaregroup.org
ALBERT EINSTEIN MEDICAL CENTER: IMMUNODEFICIENCY CENTER	www.einstein.edu
ATTIC YOUTH CENTER	www.atticyouthcenter.org
BROAD ST HEALTH CENTER-SPECTRUM COMMUNITY HEALTH CENTER	http://www.spectrumhs.org/

BUCKS COUNTY HEALTH DEPARTMENT: DOYLESTOWN	www.buckscounty.org
BUCKS COUNTY HEALTH DEPARTMENT: LEVITTOWN	www.buckscounty.org
CAMDEN AREA HEALTH EDUCATION CENTER (AHEC)	www.camden-ahec.org
CHESPENN HEALTH SERVICES-CENTER FOR FAMILY HEALTH	www.chespenn.com
CHILDREN'S HOSPITAL OF PHILADELPHIA ADOLESCENT CLINIC	www.chop.edu/centers-programs/adolescent-initiative
COLOURS	www.coloursorganization.org
CONGRESO DE LATINOS UNIDOS, INC.- PROGRAMA ESFUERZO	http://www.congreso.net/
CONGRESO DE LATINOS UNIDOS, INC.-SOMERSET	http://www.congreso.net/
COOPER UNIVERSITY HOSPITAL	www.cooperhealth.org
DELAWARE COUNTY STATE HEALTH CENTER	http://www.co.delaware.pa.us/intercommunity/pas-tatedelcocenter.html
ESPERANZA HEALTH CENTER – HUNTING PARK CLINIC	www.esperanzahealthcenter.org
ESPERANZA HEALTH CENTER – 5TH STREET CLINIC	www.esperanzahealthcenter.org
ESPERANZA HEALTH CENTER – KENSINGTON CLINIC	www.esperanzahealthcenter.org
FAIRMOUNT PRIMARY CARE CENTER	www.dvch.org
FAM CARE, INC.	http://famcare8.wwwssr10.supercp.com/services/
FAMILY PRACTICE & COUNSELING NETWORK HEALTH ANNEX	www.fpcn.com
FAMILY SERVICES OF MONTGOMERY COUNTY	www.fsmontco.org
FAMILY SERVICES OF MONTGOMERY COUNTY- POTTSTOWN OFFICE	www.fsmontco.org
FRANKFORD AVENUE HEALTH CENTER	www.gphainc.org
GAY & LESBIAN LATINO AIDS EDUCATION INITIATIVE (GALAEI) PROJECT	www.galaei.org
GPHA- CHINATOWN MEDICAL SERVICES	http://www.gphainc.org/sitesMap.asp
GPHA-HUNTING PARK HEALTH CENTER	http://www.gphainc.org/sitesMap.asp
GPHA-SOUTHEAST HEALTH CENTER	http://www.gphainc.org/sitesMap.asp
GPHA-WILSON PARK MEDICAL CENTER	http://www.gphainc.org/sitesMap.asp
GPHA-WOODLAND AVE	http://www.gphainc.org/sitesMap.asp
KENSINGTON HOSPITAL	http://www.philadelphia.pa.networkofcare.org/mh/services/medicare-hospital-detail.aspx?pn=390025
KENSINGTON HOSPITAL- ERIE CLINIC	http://www.philadelphia.pa.networkofcare.org/mh/services/medicare-hospital-detail.aspx?pn=390025
NEIGHBORHOOD UNITED AGAINST DRUGS (NUAD)	http://www.uac.org/partners/neighborhood-united-against-drugs-nuad
ODAAT	http://www.uac.org/partners/one-day-time-odaat
PARTNERSHIP COMPREHENSIVE CARE PRACTICE	http://www.drexelmedicine.org/patient-services/infectious-diseases/our-locations/
PDPH HEALTH CARE CENTER #10	http://www.phila.gov/health/ambulatoryhealth/hc10.html
PDPH HEALTH CARE CENTER #2	http://www.phila.gov/health/ambulatoryhealth/hc2.html
PDPH HEALTH CARE CENTER #3	http://www.phila.gov/health/ambulatoryhealth/hc3.html
PDPH HEALTH CARE CENTER #4	http://www.phila.gov/health/ambulatoryhealth/hc4.html

PDPH HEALTH CARE CENTER #5	http://www.phila.gov/health/ambulatoryhealth/hc5.html
PDPH HEALTH CARE CENTER #6	http://www.phila.gov/health/ambulatoryhealth/hc6.html
PDPH HEALTH CARE CENTER #9	http://www.phila.gov/health/ambulatoryhealth/hc9.html
PENN COMMUNITY PRACTICE AT PRESBYTERIAN	http://www.pennmedicine.org/penn-presbyterian-medical-center/services-programs.html
PHILADELPHIA FIGHT	www.fight.org
PHILADELPHIA HEALTH CARE CENTER #1	http://www.phila.gov/health/ambulatoryhealth/hc1.html
PLANNED PARENTHOOD - BENSALEM	https://www.plannedparenthood.org/health-center/pennsylvania/bensalem/19020/bensalem-medical-center-2513-91410
PLANNED PARENTHOOD - BRISTOL	https://www.plannedparenthood.org/health-center/pennsylvania/bristol/19007/bristol-medical-center-2511-91410/birth-control
PLANNED PARENTHOOD - CASTOR AVE	https://www.plannedparenthood.org/health-center/pennsylvania/philadelphia/19152/castor-ave.-health-center-2512-91460
PLANNED PARENTHOOD - CHESTER COUNTY	https://www.plannedparenthood.org/health-center/pennsylvania/west-chester/19382/west-chester-health-center-3356-91460
PLANNED PARENTHOOD - COATESVILLE	https://www.plannedparenthood.org/health-center/pennsylvania/coatesville/19320/coatesville-health-center-2724-91460
PLANNED PARENTHOOD - ELIZABETH BLACKWELL CENTER	https://www.plannedparenthood.org/health-center/pennsylvania/philadelphia/19107/elizabeth-blackwell-health-center-2516-91460
PLANNED PARENTHOOD - LOCUST ST	https://www.plannedparenthood.org/health-center/pennsylvania/philadelphia/19107/locust-street-surgical-center-3360-91460
PLANNED PARENTHOOD - MEDIA	https://www.plannedparenthood.org/health-center/pennsylvania/media/19063/media-health-center-2338-91460
PLANNED PARENTHOOD - NORRISTOWN	https://www.plannedparenthood.org/health-center/pennsylvania/norristown/19401/norristown-health-center-3440-91460
PLANNED PARENTHOOD - POTTSTOWN	https://www.plannedparenthood.org/health-center/pennsylvania/pottstown/19464/pottstown-health-center-2340-91460
PLANNED PARENTHOOD - QUAKERTOWN	https://www.plannedparenthood.org/health-center/pennsylvania/quakertown/18951/quakertown-health-center-2515-91410
PLANNED PARENTHOOD - THE ATRIUM	https://www.plannedparenthood.org/health-center/all/all/18974
PLANNED PARENTHOOD - UPPER DARBY	https://www.plannedparenthood.org/health-center/pennsylvania/upper-darby/19082/upper-darby-health-center-4094-91460
PLANNED PARENTHOOD - WEST CHESTER	https://www.plannedparenthood.org/health-center/pennsylvania/west-chester/19382/west-chester-health-center-3356-91460

PREVENTION POINT PHILADELPHIA- INDIANA OUTREACH SITE	http://ppponline.org/
PREVENTION POINT PHILADELPHIA- NORTH CENTRAL PHILADELPHIA OUTREACH SITE	http://ppponline.org/
PREVENTION POINT PHILADELPHIA-KENSINGTON AVE	http://ppponline.org/
PREVENTION POINT PHILADELPHIA-NORTH PHILADELPHIA OUTREACH SITE	http://ppponline.org/
PREVENTION POINT PHILADELPHIA-SOUTH PHILADELPHIA OUTREACH SITE	http://ppponline.org/
PREVENTION POINT PHILADELPHIA-WEST PHILADELPHIA OUTREACH SITE	http://ppponline.org/
QCHC MEADE FAMILY HEALTH CENTER	http://www.qchc.org/AboutUs.htm
QCHC VAUX FAMILY HEALTH CENTER	http://www.qchc.org/AboutUs.htm
QCHC-COOKE FAMILY HEALTH CENTER	http://www.qchc.org/AboutUs.htm
QUALITY COMMUNITY HEALTH CARE-WEST LEHIGH AVE	http://www.qchc.org/AboutUs.htm
SPECTRUM COMMUNITY HEALTH CENTER-HAVERFORD AVE	http://www.spectrumhs.org/
ST. CHRISTOPHER'S HOSPITAL FOR CHILDREN	http://www.scfchildren.org/dorothy-mann-center-for-pediatric-and-adolescent-hiv-2
STRAWBERRY MANSION HEALTH CENTER	http://www.phila.gov/health/ambulatoryhealth/hcstrawberry.html
TEMPLE UNIVERSITY COMPREHENSIVE HIV PROGRAM	http://www.temple.edu/medicine/departments_centers/clinical_departments/medicine_gim_hiv.htm
URBAN SOLUTIONS	http://myuhi.org/
YOUTH HEALTH EMPOWERMENT PROJECT (YHEP)	www.fight.org
YOUTH OUTREACH ADOLESCENT COMMUNITY AWARENESS PROGRAM (YOACAP)	http://www.uac.org/partners/youth-outreach-adolescent-community-awareness-program-yo-acap

Home Health Care

ABINGTON HEALTH ASSOCIATION	www.npvna.org/
AFFILIA HOME HEALTH	www.affiliahomehealth.org
COATESVILLE VA MEDICAL CENTER	www.coatesville.va.gov
DELAWARE COUNTY MEMORIAL HOSPITAL	www.crozer.org
HAHNEMANN UNIVERSITY HOSPITAL	www.hahnemannhospital.com
KEYSTONE HOME HEALTH AND HOSPICE	http://www.keystonecare.com/hospice.aspx

Housing Assistance/Shelter

ACHIEVEABILITY	www.achieveability.org
ACLAMO FAMILY CENTERS OF MONTGOMERY COUNTY	www.aclamo.org

ACTION AIDS- 1216 ARCH STREET	www.actionaids.org
ACTIONAIDS-NORTH-CASA NUEVA	www.actionaids.org
AIDS ACTIVITIES COORDINATING OFFICE	www.phila.gov/health/aaco/Housing.html
AIDS CARE GROUP - SHARON HILL	www.aidscaregroup.org
AIDS LAW PROJECT IN PENNSYLVANIA	www.aidslawpa.org
ASOCIACION DE PUERTORRIQUENOS EN MARCHA- MAIN OFFICE	www.apmphila.org
ASOCIACION DE PUERTORRIQUENOS EN MARCHA- HOUSING	www.apmphila.org
ASOCIACION PUERTORRIQUENOS EN MARCHA - COMMUNITY HEALTH CLINIC	www.apmphila.org
BEBASHI	www.bebashi.org
BETHESDA PROJECT	www.bethesdaproject.org
BUCKS VILLA	www.bucksvilla.org
BURLINGTON COUNTY BOARD OF SOCIAL SERVICES	http://www.bcbss.org/
BURLINGTON COUNTY COMMUNITY ACTION PROGRAM	http://www.bccap.org/
CALCUTTA HOUSE-INDEPENDENCE PLACE	www.calcuttahouse.org
CALCUTTA HOUSE-SERENITY COURT	www.calcuttahouse.org
CAMDEN COUNTY COUNCIL ON ECONOMIC OPPORTUNITY, INC	http://www.camdencountyoeo.com/
CENTER FOR FAMILY SERVICES, INC.	http://www.centerffs.org/
COATESVILLE VA MEDICAL CENTER	www.coatesville.va.gov
COMHAR	www.comhar.org/services/adult
COMMISSION ON HUMAN RELATIONS/FAIR HOUSING COMMISSION	www.phila.gov/humanrelations
CONGRESO DE LATINOS UNIDOS, INC.-SOMERSET	http://www.congreso.net/
CROSSROADS PROGRAMS	http://www.crossroadsprograms.org/about_crossroads/our-programs.html
EASTON AREA NEIGHBORHOOD CENTERS, INC.	http://www.eastonareaneighborhoodcenter.org/Services.html
FAMILIES FORWARD PHILADELPHIA	www.taphilly.org
FAMILY AND COMMUNITY SERVICE OF DELAWARE COUNTY	www.fcsdc.org
FAMILY SERVICE ASSOCIATION OF BUCKS COUNTY	www.fsabc.org
FAMILY SERVICES OF MONTGOMERY COUNTY	www.fsmontco.org
FRANKFORD AVENUE HEALTH CENTER	www.gphainc.org
FRIENDS REHABILITATION PROGRAM	friends-frp.com
GAY & LESBIAN LATINO AIDS EDUCATION INITIATIVE (GALAEI) PROJECT	www.galaei.org
GLOUCESTER COUNTY DIVISION OF SOCIAL SERVICES	http://www.gloucestercountynj.gov/depts/s/boardss/default.asp
GOOD SHEPHERD PROGRAM	www.saintjohnshospice.org
HOMELESSNESS PREVENTION PROGRAM	http://www.state.nj.us/dca/divisions/dhcr/offices/hpp.html
INTERFAITH HOMELESS OUTREACH COUNCIL	http://www.ihocsj.org/
MAZZONI CENTER	www.mazzonicenter.org
MOORESTOWN ECUMENICAL NEIGHBORHOOD DEVELOPMENT (MEND)	http://mendinc.org/
PROJECT H.O.M.E.	https://projecthome.org/
PUERTO RICAN ACTION COMMITTEE	http://www.pracnj.com/pracservices.html

PUERTO RICAN UNITY FOR PROGRESS	http://www.prupnj.org/charity-organization-contact-us
RALPH MOSES HOUSE	http://www.fcsdc.org/services/
SALEM COUNTY BOARD OF SOCIAL SERVICES	http://www.scbssnj.org/
ST. JOHN'S HOSPICE	www.saintjohnshospice.org
UTILITY EMERGENCY SERVICES FUND	http://www.uesfacts.org/

Legal Services

AIDS LAW PROJECT OF PENNSYLVANIA	www.aidslawpa.org
AIDS LAW PROJECT OF SOUTHERN NEW JERSEY	www.aidslawnj.org
AMERICAN CIVIL LIBERTIES UNION (ACLU) OF PENNSYLVANIA	www.aclupa.org
BURLINGTON COUNTY BAR FOUNDATION - LAWYERS REFERRAL	http://burlcobar.org/bar-foundation/
COMMUNITY LEGAL SERVICES	www.clsphila.org
COVENANT HOUSE HEALTH SERVICES	www.covenanthousepa.org
DEPARTMENT OF LAW AND PUBLIC SAFETY, DIVISION OF CIVIL RIGHTS	www.nj.gov/oag/dcr/index.html
GLOUCESTER COUNTY BAR FOUNDATION	http://www.gcbarfoundation.org/
LEGAL ASSISTANCE OF SOUTHEASTERN PA	http://lasp.org/
MAZZONI CENTER	www.mazzonicenter.org
PUERTO RICAN ACTION COMMITTEE	http://www.pracnj.com/pracservices.html
SOUTH JERSEY LEGAL SERVICES	http://www.lsnj.org/sjls/

Medications and on Site Pharmacy

AIDS DRUG DISTRIBUTION PROGRAM OF NEW JERSEY (ADDP)	www.nj.gov/health/aids/freemededs.shtml
ALBERT EINSTEIN MEDICAL CENTER IMMUNODEFICIENCY CENTER	http://www.einstein.edu/
CHILDREN'S HOSPITAL OF PHILADELPHIA - SPECIAL IMMUNOLOGY FAMILY CARE CENTER	www.chop.edu
CHILDREN'S HOSPITAL OF PHILADELPHIA ADOLESCENT CLINIC	http://www.chop.edu/centers-programs/adolescent-initiative
COMMUNITY A WALGREENS PHARMACY	www.walgreens.com
COMMUNITY HEALTH AND EDUCATION OUTREACH (CHEO)	www.cheoinc.com
ESPERANZA HEALTH CENTER – HUNTING PARK SITE	www.esperanzahealthcenter.org
ESPERANZA HEALTH CENTER – 5 TH STREET SITE	www.esperanzahealthcenter.org
ESPERANZA HEALTH CENTER – KENSINGTON SITE	www.esperanzahealthcenter.org
FAMILY PRACTICE & COUNSELING NETWORK HEALTH ANNEX	www.fpcn.com
GPHA-4 TH STREET MEDICAL SUITE	http://www.gphainc.org/sitesMap.asp
GPHA-HUNTING PARK HEALTH CENTER	http://www.gphainc.org/sitesMap.asp
GPHA-WILSON PARK MEDICAL CENTER	http://www.gphainc.org/sitesMap.asp
GPHA-WOODLAND AVE	http://www.gphainc.org/sitesMap.asp
HOSPITAL OF THE UPENN/ MACGREGOR INFECTIOUS DISEASE CLINIC	www.pennmedicine.org
LAX CENTER	www.fight.org

PDPH HEALTH CARE CENTER #10	http://www.phila.gov/health/ambulatoryhealth/hc10.html
PDPH HEALTH CARE CENTER #2	http://www.phila.gov/health/ambulatoryhealth/hc2.html
PDPH HEALTH CARE CENTER #3	http://www.phila.gov/health/ambulatoryhealth/hc3.html
PDPH HEALTH CARE CENTER #4	http://www.phila.gov/health/ambulatoryhealth/hc4.html
PDPH HEALTH CARE CENTER #5	http://www.phila.gov/health/ambulatoryhealth/hc5.html
PDPH HEALTH CARE CENTER #6	http://www.phila.gov/health/ambulatoryhealth/hc6.html
PDPH HEALTH CARE CENTER #9	http://www.phila.gov/health/ambulatoryhealth/hc9.html
SPECIAL PHARMACEUTICAL BENEFITS PROGRAM – PENNSYLVANIA ADAP	http://www.portal.state.pa.us/portal/server.pt/community/hiv_aids/14241/special_pharmaceutical_benefits_program/1314737
STRAWBERRY MANSION HEALTH CENTER	http://www.phila.gov/health/ambulatoryhealth/hcStrawberry.html
VALLEY FORGE MEDICAL CENTER AND HOSPITAL	http://www.vfmc.net/index.html
VETERANS AFFAIRS MEDICAL CENTER	www.philadelphia.va.gov
WALGREEN'S - 1101 LOCUST ST	www.walgreens.com
WALGREEN'S - 1227 LOCUST ST	www.walgreens.com
WALGREEN'S - 807 LOCUST ST	www.walgreens.com

Mental and Behavioral Health Services

11TH STREET FAMILY HEALTH SERVICES OF DREXEL UNIVERSITY	www.drexel.edu/11thStreet
ABBOTSFORD-FALLS FAMILY PRACTICE	www.fpcn.com
ACTION AIDS- 1216 ARCH STREET	www.actionaids.org
AIDS CARE GROUP	www.aidscalegroup.org
ALBERT EINSTEIN MEDICAL CENTER IMMUNODEFICIENCY CENTER	http://www.einstein.edu/
ASOCIACION PUERTORRIQUENOS EN MARCHA	www.apmphila.org
BELMONT CENTER FOR COMPREHENSIVE TREATMENT	www.einstein.edu/locations/belmont-behavioral-health/
BETHANNA	www.bethanna.org/bethanna
BLACK WOMEN'S HEALTH ALLIANCE	www.pbwha.org
BRIDGE TREATMENT PROGRAM	www.thebridgePhiladelphia.org
BURLINGTON COMPREHENSIVE COUNSELING INC.	http://burlingtoncomprehensive.com/
CENTER FOR FAMILY SERVICES, INC-	www.centerffs.org
CHILDREN'S HOSPITAL OF PHILADELPHIA - SPECIAL IMMUNOLOGY FAMILY CARE CENTER/	www.chop.edu
COATESVILLE VA MEDICAL CENTER	www.coatesville.va.gov
COMHAR	www.comhar.org/services/adult
COMHAR - COMMUNITY LIVING ROOM	www.comhar.org/services/adult
COMHAR – PACT	www.comhar.org/services/adult
COMMUNITY BEHAVIORAL HEALTH (CBH)	www.phila.gov/dbhids
COMMUNITY COUNCIL FOR HEALTH	www.cchss.org
CONSORTIUM	www.consortium-inc.org

COOPER EIP	www.cooperhealth.org
CRISIS RESPONSE CENTER AT EINSTEIN-GERMANTOWN COMMUNITY CENTER	www.eistein.edu
CRISIS RESPONSE CENTER AT FRIENDS HOSPITAL	www.friendshospital.com
CRISIS RESPONSE CENTER AT HALL MERCER/PENNSYLVANIA HOSPITAL	www.mercyhealth.org/mercyPhiladelphia
CRISIS RESPONSE CENTER AT TEMPLE/ EPISCOPAL HOSPITAL	www.episcopal.templehealth.org
DELAWARE CO. OFFICE OF BEHAVIORAL HEALTH	http://www.delcohsa.org/behavioralhealth.html
DEPARTMENT OF BEHAVIORAL HEALTH AND INTELLECTUAL DISABILITY SERVICES	www.dbhids.org
DRENK BEHAVIORAL HEALTH CENTER	http://www.drenk.org/
EPISCOPAL HOSPITAL	http://episcopal.templehealth.org/
ESPERANZA HEALTH CENTER	www.esperanzahealthcenter.org
ESPERANZA HEALTH CENTER – HUNTING PARK SITE	www.esperanzahealthcenter.org
ESPERANZA HEALTH CENTER – 5 TH STREET SITE	www.esperanzahealthcenter.org
ESPERANZA HEALTH CENTER – KENSINGTON SITE	www.esperanzahealthcenter.org
FAMILY AND COMMUNITY SERVICE OF DELAWARE COUNTY	www.fcsdc.org
FAMILY PRACTICE & COUNSELING NETWORK HEALTH ANNEX	www.fpcn.com
FAMILY SERVICE ASSOCIATION OF BUCKS COUNTY	www.fsabc.org
FAMILY SERVICE OF CHESTER COUNTY	www.familyservice.us
FAMILY SERVICES OF MONTGOMERY COUNTY	www.fsmontco.org
GAUDENZIA INC.	http://www.gaudenzia.org .
GAUDENZIA, INC.	http://www.gaudenzia.org/
GPHA-4 TH STREET MEDICAL SUITE	http://www.gphainc.org/sitesMap.asp
GPHA-FRANKFORD AVE BEHAVIORAL HEALTH CENTER	http://www.gphainc.org/sitesMap.asp
HEALTHCARE COMMONS, INC.	http://www.hcommons.com/
HISPANIC FAMILY CENTER OF SOUTHERN NJ, INC.	http://www.hispanicfamilycenter.com/
HOLCOMB BEHAVIORAL HEALTH SYSTEMS	http://www.chimes.org/holcomb/
HORIZON HOUSE	www.hhinc.org
HORIZON HOUSE	www.hhinc.org
HUMAN SERVICES, INC.	http://www.hsi-cmhs.com/
JONATHAN LAX TREATMENT CENTER	www.fight.org
KENNEDY HEALTH SYSTEMS-GARDEN STATE INFECTIOUS DISEASE ASSOCIATES, P.A.	http://www.kennedyhealth.org/
KENNEDY UNIVERSITY HOSPITALS, INC. - BEHAVIORAL HEALTH	http://www.kennedyhealth.org/
KENSINGTON HOSPITAL	http://www.philadelphia.pa.networkofcare.org/mh/services/medicare-hospital-detail.aspx?pn=390025
KIRKBRIDE REHABILITATION CENTER	www.kirkbridecenter.org
MARYVILLE, INC.	http://maryvillenj.org/
MAZZONI CENTER	www.mazzonicenter.org
NORTHEAST TREATMENT CENTER	http://netcenters.org/
PARTNERSHIP COMPREHENSIVE CARE PRACTICE	http://www.drexelmedicine.org/patient-services/infectious-diseases/our-locations/
PDPH HEALTH CARE CENTER #3	http://www.phila.gov/health/ambulatoryhealth/hc3.html
PDPH HEALTH CARE CENTER #4	http://www.phila.gov/health/ambulatoryhealth/hc4.html

PHILADELPHIA MENTAL HEALTH CARE CORPORATION	http://pmhcc.org/
ST. CHRISTOPHER'S HOSPITAL FOR CHILDREN	http://www.scfchildren.org/dorothy-mann-center-for-pediatric-and-adolescent-hiv-2
STRAWBERRY MANSION HEALTH CENTER	http://www.phila.gov/health/ambulatoryhealth/hcsstrawberry.html

Nutrition Services and Assessment

11TH STREET FAMILY HEALTH SERVICES OF DREXEL UNIVERSITY	www.drexel.edu/11thStreet
AIDS CARE GROUP	www.aidscaregroup.org
CHILDREN'S HOSPITAL OF PHILADELPHIA - SPECIAL IMMUNOLOGY FAMILY CARE CENTER	www.chop.edu
COMMUNITY HEALTH AND EDUCATION OUTREACH (CHEO)	www.cheoinc.com
ESPERANZA HEALTH CENTER – HUNTING PARK CLINIC	www.esperanzahealthcenter.org
ESPERANZA HEALTH CENTER – 5TH STREET CLINIC	www.esperanzahealthcenter.org
ESPERANZA HEALTH CENTER – KENSINGTON CLINIC	www.esperanzahealthcenter.org
MANNA- METROPOLITAN AREA NEIGHBORHOOD NUTRITION ALLIANCE	http://www.mannapa.org/
PARTNERSHIP COMPREHENSIVE CARE PRACTICE	http://www.drexelmedicine.org/patient-services/infectious-diseases/our-locations/
PHMC CARE CLINIC	http://www.phmc.org/site/index.php?option=com_content&view=article&id=375:..
TEMPLE UNIVERSITY COMPREHENSIVE HIV PROGRAM	http://www.temple.edu/medicine/departments_centers/clinical_departments/medicine_gim_hiv.htm

Pre-Exposure Prophylaxis Providers

AIDS CARE GROUP- EDGMONT AVE		www.aidscaregroup.org
AIDS CARE GROUP-SHARON HILL		www.aidscaregroup.org
ALBERT EINSTEIN MEDICAL CENTER	Robert A Fischer, MD	http://www.einstein.edu/
IF PATIENT OF EINSTEIN HOSPITAL		
BRANDYWINE VALLEY INFECTIOUS DISEASE ASSOCIATES	Raida Rabah, MD	http://doctor.webmd.com/practice/brandywine-valley-infectious-disease-associates-56300bc8-4703-e211-a42b-001f29e3eb44-overview
CHILDREN'S HOSPITAL OF PHILADELPHIA	Steven D. Douglas, MD	http://www.chop.edu/centers-programs/adolescent-initiative
ADOLESCENT INITIATIVE		
CONGRESO DE LATINOS UNIDOS, INC.		http://www.congreso.net/
DOROTHY MANN CENTER FOR PEDIATRIC AND ADOLESCENT HIV AT ST. CHRISTOPHER'S HOSPITAL FOR CHILDREN	Janet Chen, MD Daniel Conway, MD Jill Foster, MD Roberta Laguerre, MD Neil Relloso, MD	http://www.scfchildren.org/dorothy-mann-center-for-pediatric-and-adolescent-hiv-2

DREXEL UNIVERSITY COLLEGE OF MEDICINE/PARTNERSHIP COMPREHENSIVE CARE PRACTICE 1	Amy Baranoski, MD, MSc Jeffrey M. Jacobson, MD Dong Heun Lee, MD Zsofi Szep, MD, MSCE Stacey Trooskin, MD, PhD Christopher Vinnard, MD, MPH	http://www.drexelmedicine.org/patient-services/infectious-diseases/our-locations/
FAMILY PRACTICE & COUNSELING NETWORK HEALTH ANNEX	Ani Maitin, CRNP	www.fpcn.com
FAMILY PRACTICE & COUNSELING NETWORK-ABBOTTSFORD FALLS		www.fpcn.com
GARDEN STATE INFECTIOUS DISEASES ASSOCIATES, P.A (KENNEDY HEALTH SYSTEMS)	David V. Condoluci, D.O. Mark J. Fussa, D.O.	http://www.gsida.org
GPHA - WOODLAND AVENUE HEALTH CENTER	Dr. Brenda Rogers Joseph Ondercin, PA	http://www.gphainc.org
GPHA -SOUTHEAST HEALTH CENTER	Dr. Luistro Anthony Josheph Ondercin, PA	http://www.gphainc.org
JOHN BELL HEALTH CENTER		www.fight.org
JONATHAN LAX TREATMENT CENTER	Helen Koenig, MD Joe Garland, MD Angela Kapalko, MHS, PA-C	www.fight.org
KENNEDY HEALTH SYSTEMS- RAPHAEL MEADOW CENTER		http://www.kennedyhealth.org/
KENNEDY HEALTH SYSTEMS- VOORHEES		http://www.kennedyhealth.org/
KENSINGTON HOSPITAL	Dr. Nicolas Ifft	http://www.philadelphia.pa.networfcare.org/mh/services/medicine-hospital-detail.aspx?pn=390025
MAZZONI CENTER FAMILY & COMMUNITY MEDICINE	Dr. Robert Winn Nancy Brisbon, MD	www.mazzonicenter.org/programs/medical-care
PDPH DISTRICT HEALTH CENTER # 10	Dr. Sarah Messick	http://www.phila.gov/health/ambulatoryhealth/hc10.html
PDPH DISTRICT HEALTH CENTER #2	Dr. Stacey Parker-Johnson, DO Dr. V B. Marshall Jr, DO	http://www.phila.gov/health/ambulatoryhealth/hc2.html
PDPH DISTRICT HEALTH CENTER #3	Dr. Esther Chernak	http://www.phila.gov/health/ambulatoryhealth/hc3.html
PDPH DISTRICT HEALTH CENTER #4	Blake Marshall, DO	http://www.phila.gov/health/ambulatoryhealth/hc4.html
PDPH DISTRICT HEALTH CENTER #5	Dr. Rita Eburuoh	http://www.phila.gov/health/ambulatoryhealth/hc5.html
PDPH DISTRICT HEALTH CENTER #6	Blake Marshall, DO	http://www.phila.gov/health/ambulatoryhealth/hc6.html
PDPH DISTRICT HEALTH CENTER #9	James Dean, MD Eileen Donaghy, CRNP	http://www.phila.gov/health/ambulatoryhealth/hc9.html
PDPH STRAWBERRY MANSION HEALTH CENTER	Dr. Millen Gebreselassie Dr. Tanya Malone Dr. Helena Kwakwa Jeanette Skipper-Thomas	http://www.phila.gov/health/ambulatoryhealth/hcStrawberry.html

	Charlotta Swain	
PENN INFECTIOUS DISEASES AND TRAVEL MEDICINE		http://www.pennmedicine.org/providers/results.aspx?lid=66
PENN PRESBYTERIAN MEDICAL CENTER-INFECTIOUS DISEASES	Brendan J. Kelly, MD Jay R. Kostman, MD Carol A. McLaughlin, MD Vincent Lo Re, III, MD Naasha J. Talati, MD	http://www.pennmedicine.org/infectious-diseases/
PHMC CARE CLINIC *WILL PROVIDED IF PATIENT OF CLINIC*	Helena Kwakwa, MD Roberta LeePowell, MD Alvin Kingcade, PA Katie Huynn, PA	http://www.phmc.org/site/index.php?option=com_content&view=article&id=375:..
SPECTRUM HEALTH SERVICES INC.	Kheng Lim, MD Carlotta Lindsay, MD Daniel Moscow, MD	http://www.spectrumhs.org/
TEMPLE UNIVERSITY COMPREHENSIVE HIV PROGRAM		http://www.temple.edu/medicine/departments_centers/clinical_departments/medicine_gim_hiv.htm
THE MACGREGOR CLINIC HOSPITAL OF THE UNIVERSITY OF PENNSYLVANIA	Valerianna K. Amorosa, MD Katharine J. Bar, MD Todd Barton, MD Emily A. Blumberg, MD Neil O. Fishman, MD Ian Frank, MD Phillip A. Green, MD Robert Gross, MD, MSCE Janet Hines, MD Rahul M. Kohli, MD, PhD	http://www.pennmedicine.org/infectious-diseases/
THOMAS JEFFERSON UNIVERSITY INFECTIOUS DISEASES	Bryan D. Hess, MD Kathleen Squires, MD	http://hospitals.jefferson.edu/departments-and-services/infectious-diseases/
YOUTH HEALTH EMPOWERMENT PROJECT (YHEP)		www.fight.org

Substance Use Treatment Services

ACT ONE (ACHIEVEMENT THROUGH COUNSELING AND TREATMENT)	www.jevshumanservices.org
ACT TWO (ACHIEVEMENT THROUGH COUNSELING AND TREATMENT)	www.jevshumanservices.org
AL-ANON INFO SERVICE OF DELAWARE VALLEY	AISDV.org
AL-ANON SOUTHERN JERSEY INFORMATION	http://www.southjerseyal-anon.org/index.html
ALCOHOLICS ANONYMOUS, SOUTHEASTERN PENNSYLVANIA INTERGROUP ASSOCIATION (SEPIA)	www.sepennaa.org
ASOCIACION DE PUERTORRIQUENOS EN MARCHA	www.apmphila.org
BEHAVIORAL HEALTH SPECIAL INITIATIVE (BHSI)	www.dbhids.org/behavioral-health-special-initiative
BELMONT CENTER FOR COMPREHENSIVE TREATMENT	www.einstein.edu/locations/belmont-behavioral-health/
BRIDGE TREATMENT PROGRAM	www.thebridgePhiladelphia.org
BRIDGES STEP DOWN	www.phmc.org
CENTER FOR FAMILY SERVICES	http://www.centerffs.org/

CHILDREN'S HOSPITAL OF PHILADELPHIA - COBBS CREEK	/www.chop.edu
CHILDREN'S HOSPITAL OF PHILADELPHIA ADOLESCENT CLINIC	/www.chop.edu
COCAINE ANONYMOUS	www.caphilly.org
COMMUNITY BEHAVIORAL HEALTH (CBH)	www.phila.gov/dbhids
COMMUNITY COUNCIL FOR HEALTH SYSTEMS	www.cchss.org
CONSORTIUM	www.consortium-inc.org
COUNCIL OF SOUTHEAST PENNSYLVANIA	www.councilsepa.org/
COUNCIL ON ADDICTIVE DISEASES (COAD)	www.coadgroup.com
CRISIS RESPONSE CENTER AT EINSTEIN-GERMANTOWN COMMUNITY CENTER	www.eistein.edu
CRISIS RESPONSE CENTER AT FRIENDS HOSPITAL	www.friendshospital.com
CRISIS RESPONSE CENTER AT MERCY HOSPITAL	www.mercyhealth.org/mercyPhiladelphia
CRISIS RESPONSE CENTER AT TEMPLE/ EPISCOPAL HOSPITAL	www.episcopal.templehealth.org
CROZER KEYSTONE HEALTH SYSTEMS	www.crozer.org
DEPARTMENT OF BEHAVIORAL HEALTH AND INTELLECTUAL DISABILITY SERVICES	www.dbhids.org
EAGLEVILLE HOSPITAL	www.eaglevillehospital.org
FAMILY AND COMMUNITY SERVICE OF DELAWARE COUNTY	www.fcsdc.org
FRANKFORD AVENUE HEALTH CENTER	www.gphainc.org
GAUDENZIA, INC.	http://www.gaudenzia.org/
GOOD SHEPARD PROGRAM OF ST. JOHNS HOSPICE	http://saintjohnshospice.org/
GPHA/AL-ASSIST BEHAVIORAL HEALTH CARE CENTER	http://www.gphainc.org/sitesMap.asp
GPHA-WILSON PARK MEDICAL CENTER	http://www.gphainc.org/sitesMap.asp
HOLCOMB BEHAVIORAL HEALTH SYSTEMS	http://www.chimes.org/holcomb/
KENSINGTON HOSPITAL	http://www.philadelphia.pa.networkofcare.org/mh/services/medicare-hospital-detail.aspx?pn=390025
KENSINGTON HOSPITAL-ERIE CLINIC	http://www.philadelphia.pa.networkofcare.org/mh/services/medicare-hospital-detail.aspx?pn=390025
MARIA DE LOS SANTOS HEALTH CENTER	http://dvch.org/locations/maria-de-los-santos-health-center/
MARYVILLE, INC.	http://maryvillenj.org/
NORTHEAST TREATMENT CENTER	http://netcenters.org/
ODAAT	http://www.uac.org/partners/one-day-time-odaat
OFFICE OF ADDICTION SERVICES	www.dbhids.org/office-of-addictive-services
PENN BEHAVIORAL HEALTH	www.med.upenn.edu/pbh
PHILADELPHIA FIGHT	www.fight.org
PREVENTION POINT PHILADELPHIA- INDIANA OUTREACH SITE	http://ppponline.org/
PREVENTION POINT PHILADELPHIA- NORTH CENTRAL PHILADELPHIA OUTREACH SITE	http://ppponline.org/
PREVENTION POINT PHILADELPHIA-KENSINGTON AVE	http://ppponline.org/
PREVENTION POINT PHILADELPHIA-NORTH PHILADELPHIA OUTREACH SITE	http://ppponline.org/
PREVENTION POINT PHILADELPHIA-SOUTH PHILADELPHIA OUTREACH SITE	http://ppponline.org/
PREVENTION POINT PHILADELPHIA-WEST PHILADELPHIA OUTREACH SITE	http://ppponline.org/

READY, WILLING AND ABLE	www.rwaphiladelphia.org
RESOURCES FOR HUMAN DEVELOPMENT	www.rhd.org
VALLEY FORGE MEDICAL CENTER AND HOSPITAL	http://www.vfmc.net/index.html

Transportation

AIDS CARE GROUP	www.aidscaregroup.org
BUCKS COUNTY TRANSPORT	www.bctransport.org
COMMUNITY TRANSIT OF DELAWARE COUNTY	www.ctdelco.org
PUBLIC HEALTH MANAGEMENT CORP - TRANSPORTATION	www.phmc.org
PUERTO RICAN ACTION COMMITTEE	http://www.pracnj.com/pracservices.html

Work Force Capacity Table

The table specifically compares the ratio of the identified area's concentration of an occupation type to the national average. This information is conveyed using the location quotient. A location quotient greater than one indicates the occupation has a higher share of employment than average, and a location quotient less than one indicates the occupation is less prevalent in the area than average. Occupations with a location quotient less than one have been highlighted in orange.

Occupation Title ⁴	Area ⁵	Estimated Number of Positions ⁶	Location Quotient ⁷	Occupation Description ⁸
Community and Social Service Occupations	Burlington, Camden and Gloucester Co.	10,100	1.36	Community health workers collect data and discuss health concerns with members of specific populations and or are concerned with improving society and the lives of individuals. These workers perform a diverse array of duties that may include counseling individuals with substance abuse and behavioral problems, providing social assistance to improve the social and psychological functioning of families, and offering spiritual and moral guidance to members of a faith.
	Bucks, Chester, and Montgomery Co.	14,220	0.97	
	Delaware and Philadelphia Co.	24,560	1.92	
Community Health Workers	Burlington, Camden and Gloucester Co.	220	1.17	Health educators teach people about behaviors that promote wellness. They develop and implement strategies to improve the health of individuals and communities. Community health workers collect data and discuss health concerns with members of specific populations or communities.
	Bucks, Chester, and Montgomery Co.	250	0.67	
	Delaware and Philadelphia Co.	240	0.71	
Counselors, All Other	Burlington, Camden and Gloucester Co.	120	0.58	All counselors not listed separately.
	Bucks, Chester, and Montgomery Co.	250	0.67	
	Delaware and Philadelphia Co.	100	0.54	
Dental Assistants	Burlington, Camden and Gloucester Co.	1,400	1.16	Dental assistants have many tasks, ranging from providing patient care and taking x-rays to recordkeeping and scheduling appointments. Their duties vary by state and by the dentists' offices where they work.
	Bucks, Chester, and Montgomery Co.	1,960	0.82	
	Delaware and Philadelphia Co.	2,170	1.04	

⁴ Occupation Title- All the information was obtained from the United States Department of Labor, Bureau of Labor Statistics, <http://www.bls.gov/ooh/occupation-finder.htm>

⁵ Area-Metropolitan Statistical Area. For this table three areas were used Camden, NJ Metropolitan Division (15804), the Montgomery Metropolitan Division (33874) and the Philadelphia, PA Metropolitan Division (37964). Salem County is NOT included in these divisions.

⁶ Estimated number of positions-Estimated total employment rounded to the nearest 10 (excludes self-employed)

⁷ Location Quotient-The location quotient is the ratio of the identified area's concentration of occupational employment as compared to the national average concentration. A location quotient greater than one indicates the occupation has a higher share of employment than average, and a location quotient less than one indicates the occupation is less prevalent in the area than average. The location quotient represents the ratio of an occupation's share of employment in a given area as compared to that occupation's share of employment in the U.S. as a whole.

⁸ Occupation Description-Based on the descriptions in the Occupation Outlook Handbook, May 2016

Occupation Title	Area	Estimated Number of Positions	Location Quotient	Occupation Description
Dental Hygienists	Burlington, Camden and Gloucester Co.	631	0.83	Clean teeth and examine oral areas, head, and neck for signs of oral disease. May educate patients on oral hygiene, take and develop x-rays, or apply fluoride or sealants.
	Bucks, Chester, and Montgomery Co.	2,190	1.47	
	Delaware and Philadelphia Co.	1,070	0.82	
Dentists, General	Burlington, Camden and Gloucester Co.	630	1.63	Dentists diagnose and treat problems with a patient's teeth, gums, and related parts of the mouth. They provide advice and instruction on taking care of teeth and gums and on diet choices that affect oral health.
	Bucks, Chester, and Montgomery Co.	1,120	1.46	
	Delaware and Philadelphia Co.	550	0.81	
Dietitians and Nutritionists	Burlington, Camden and Gloucester Co.	160	0.70	Dietitians and nutritionists are experts in food and nutrition. They advise people on what to eat in order to lead a healthy lifestyle or achieve a specific health-related goal.
	Bucks, Chester, and Montgomery Co.	500	1.12	
	Delaware and Philadelphia Co.	490	1.26	
Emergency Medical Technicians and Paramedics	Burlington, Camden and Gloucester Co.	1,230	1.36	Emergency medical technicians (EMTs) and paramedics care for the sick or injured in emergency medical settings. People's lives often depend on their quick reaction and competent care. EMTs and paramedics respond to emergency calls, performing medical services and transporting patients to medical facilities.
	Bucks, Chester, and Montgomery Co.	1,590	0.89	
	Delaware and Philadelphia Co.	1,310	0.84	
Epidemiologists	Delaware and Philadelphia Co.	60	1.60	Epidemiologists are public health professionals who investigate patterns and causes of disease and injury in humans. They seek to reduce the risk and occurrence of negative health outcomes through research, community education, and health policy.
Family and General Practitioners	Burlington, Camden and Gloucester Co.	450	1.00	Physicians and surgeons diagnose and treat injuries or illnesses. Physicians examine patients; take medical histories; prescribe medications; and order, perform, and interpret diagnostic tests. They counsel patients on diet, hygiene, and preventive healthcare. Surgeons operate on patients to treat injuries, such as broken bones; diseases, such as cancerous tumors; and deformities, such as cleft palates.
	Bucks, Chester, and Montgomery Co.	810	0.90	
	Delaware and Philadelphia Co.	1,180	1.52	

Occupation Title	Area	Estimated Number of Positions	Location Quotient	Occupation Description
Health Educators	Burlington, Camden and Gloucester Co.	90	0.44	Health educators teach people about behaviors that promote wellness. They develop and implement strategies to improve the health of individuals and communities. Community health workers collect data and discuss health concerns with members of specific populations or communities.
	Bucks, Chester, and Montgomery Co.	24	0.57	
	Delaware and Philadelphia Co.	470	1.29	
Healthcare Practitioners and Technical Occupations	Bucks, Chester, and Montgomery Co.	60	0.23	All healthcare practitioners and technical workers not listed separately.
	Delaware and Philadelphia Co.	290	1.26	
Healthcare Support Occupations	Burlington, Camden and Gloucester Co.	22,780	1.53	This major group comprises the all healthcare support occupations
	Bucks, Chester, and Montgomery Co.	30,700	1.04	
	Delaware and Philadelphia Co.	36,760	1.43	
Healthcare Support Workers, All Other	Burlington, Camden and Gloucester Co..	1,100	3.21	All healthcare support workers not listed separately
	Delaware and Philadelphia Co.	110	0.17	
	Bucks, Chester, and Montgomery Co.	550	0.93.	
Home Health Aides	Burlington, Camden and Gloucester Co.	4,550	1.52	Home health aides help people who are disabled, chronically ill, or cognitively impaired. They often help older adults who need assistance. In some states, home health aides may be able to give a client medication or check the client's vital signs under the direction of a nurse or other healthcare practitioner.
	Delaware and Philadelphia Co.	7,090	1.19	
	Bucks, Chester, and Montgomery Co.	11,860	2.30	
Internists, General	Burlington, Camden and Gloucester Co.	90	0.56	Diagnose and provide non-surgical treatment of diseases and injuries of internal organ systems. Provide care mainly for adults who have a wide range of problems associated with the internal organs. Include subspecialists, such as cardiologists and gastroenterologists, with "All Other Physicians" (29-1069).
	Delaware and Philadelphia Co.	140	0.42	
	Bucks, Chester, and Montgomery Co.	210	0.72	

Occupation Title	Area	Estimated Number of Positions	Location Quotient	Occupation Description
Lawyers	Burlington, Camden and Gloucester Co.	2,610	1.14	Lawyers advise and represent individuals, businesses, and government agencies on legal issues and disputes.
	Bucks, Chester, and Montgomery Co.	4,210	0.93	
	Delaware and Philadelphia Co.	9,940	2.53	
Licensed Practical and Licensed Vocational Nurses	Burlington, Camden and Gloucester Co.	2,740	1.06	Licensed practical nurses (LPNs) and licensed vocational nurses (LVNs) provide basic nursing care. They work under the direction of registered nurses and doctors.
	Bucks, Chester, and Montgomery Co.	5,720	1.12	
	Delaware and Philadelphia Co.	5,700	1.28	
Medical and Clinical Laboratory Technicians	Burlington, Camden and Gloucester Co.	360	0.60	Perform routine medical laboratory tests for the diagnosis, treatment, and prevention of disease. May work under the supervision of a medical technologist.
	Bucks, Chester, and Montgomery Co.	1,390	1.19	
	Delaware and Philadelphia Co.	2,130	2.18	
Medical and Health Services Managers	Burlington, Camden and Gloucester Co.	1,510	1.23	Medical and health services managers, also called healthcare executives or healthcare administrators, plan, direct, and coordinate medical and health services. They might manage an entire facility or specialize in managing a specific clinical area or department, or manage a medical practice for a group of physicians. Medical and health services managers must be able to adapt to changes in healthcare laws, regulations, and technology.
	Bucks, Chester, and Montgomery Co.	2,380	0.98	
	Delaware and Philadelphia Co.	2,530	1.20	
Medical Assistants	Burlington, Camden and Gloucester Co.	3,260	1.42	Medical assistants complete administrative and clinical tasks in the offices of physicians, podiatrists, chiropractors, and other health practitioners. Their duties vary with the location, specialty, and size of the practice.
	Bucks, Chester, and Montgomery Co.	4,130	0.91	
	Delaware and Philadelphia Co.	4,120	0.41	

Occupation Title	Area	Estimated Number of Positions	Location Quotient	Occupation Description
Medical Scientists, Except Epidemiologists	Bucks, Chester, and Montgomery Co.	4,090	5.15	Medical scientists conduct research aimed at improving overall human health. They often use clinical trials and other investigative methods to reach their findings.
	Delaware and Philadelphia Co.	1,120	1.62	
Mental Health and Substance Abuse Social Workers	Burlington, Camden and Gloucester Co.	110	0.26	Assess and treat individuals with mental, emotional, or substance abuse problems, including abuse of alcohol, tobacco, and/or other drugs. Activities may include individual and group therapy, crisis intervention, case management, client advocacy, prevention, and education.
	Bucks, Chester, and Montgomery Co.	1,830	2.20	
	Delaware and Philadelphia Co.	2,400	3.32	
Mental Health Counselors	Burlington, Camden and Gloucester Co.	550	1.06	Mental health counselors and marriage and family therapists help people manage and overcome mental and emotional disorders and problems with their family and relationships. They listen to clients and ask questions, to help the clients understand their problems and develop strategies to improve their lives.
	Bucks, Chester, and Montgomery Co.	1,900	1.87	
	Delaware and Philadelphia Co.	2,730	3.08	
Nurse Practitioners	Burlington, Camden and Gloucester Co.	540	0.98	Nurse anesthetists, nurse midwives, and nurse practitioners, also referred to as advanced practice registered nurses (APRNs), provide and coordinate patient care and they may provide primary and specialty health care. The scope of practice varies from state to state.
	Bucks, Chester, and Montgomery Co.	720	0.66	
	Delaware and Philadelphia Co.	1,030	1.08	
Nursing Assistants	Burlington, Camden and Gloucester Co.	9,350	1.76	Nursing assistants and orderlies help provide basic care for patients in hospitals and residents of long-term care facilities, such as nursing homes.
	Bucks, Chester, and Montgomery Co.	13,150	1.25	
	Delaware and Philadelphia Co.	13,350	1.46	
Obstetricians and Gynecologists	Burlington, Camden and Gloucester Co.	120	1.58	Diagnose, treat, and help prevent diseases of women, especially those affecting the reproductive system and the process of childbirth.
	Bucks, Chester, and Montgomery Co.	**	**	
	Delaware and Philadelphia Co.	50	.40	

Occupation Title	Area	Estimated Number of Positions	Location Quotient	Occupation Description
Opticians, Dispensing	Burlington, Camden and Gloucester Co.	100	0.37	Dispensing opticians help fit eyeglasses and contact lenses, following prescriptions from ophthalmologists and optometrists. They also help customers decide which eyeglass frames or contact lenses to buy.
	Bucks, Chester, and Montgomery Co.	430	0.78	
	Delaware and Philadelphia Co.	320	0.66	
Optometrists	Burlington, Camden and Gloucester Co.	200	1.48	Optometrists examine the eyes and other parts of the visual system. They also diagnose, and treat visual problems, and manage diseases, injuries, and other disorders of the eyes. They prescribe eyeglasses or contact lenses as needed.
	Bucks, Chester, and Montgomery Co.	140	0.54	
	Delaware and Philadelphia Co.	180	0.78	
Pediatricians, General	Burlington, Camden and Gloucester Co.	340	3.43	Physicians who diagnose, treat, and help prevent children's diseases and injuries.
	Delaware and Philadelphia Co.	130	0.76	
Personal Care Aides	Burlington, Camden and Gloucester Co.	1,680	0.31	Assist the elderly, convalescents, or persons with disabilities with daily living activities at the person's home or in a care facility. Duties performed at a place of residence may include keeping house (making beds, doing laundry, washing dishes) and preparing meals. May provide assistance at non-residential care facilities. May advise families, the elderly, convalescents, and persons with disabilities regarding such things as nutrition, cleanliness, and household activities.
	Bucks, Chester, and Montgomery Co.	17,160	1.58	
	Delaware and Philadelphia Co.	17,150	1.81	
Pharmacists	Burlington, Camden and Gloucester Co.	1,320	1.17	Pharmacists dispense prescription medications to patients and offer expertise in the safe use of prescriptions. They also may provide advice on how to lead a healthy lifestyle, conduct health and wellness screenings, provide immunizations, and oversee the medications given to patients.
	Bucks, Chester, and Montgomery Co.	2,250	1.01	
	Delaware and Philadelphia Co.	2,590	1.34	
Pharmacy Technicians	Burlington, Camden and Gloucester Co.	1,520	1.04	Pharmacy technicians help licensed pharmacists dispense prescription medication to customers or health professionals.
	Bucks, Chester, and Montgomery Co.	2,950	1.02	
	Delaware and Philadelphia Co.	2,990	1.18	

Occupation Title	Area	Estimated Number of Positions	Location Quotient	Occupation Description
Phlebotomists	Burlington, Camden and Gloucester Co.	550	1.24	Phlebotomists draw blood for tests, transfusions, research, or blood donations. Some explain their work to patients and provide assistance when patients have adverse reactions after their blood is drawn.
	Bucks, Chester, and Montgomery Co.	290	0.33	
	Delaware and Philadelphia Co.	520	0.68	
Physical Therapist Aides	Burlington, Camden and Gloucester Co.	560	3.04	Physical therapist assistants (sometimes called PTAs) and physical therapist aides work under the direction and supervision of physical therapists. They help patients who are recovering from injuries and illnesses regain movement and manage pain.
	Bucks, Chester, and Montgomery Co.	360	0.98	
	Delaware and Philadelphia Co.	170	0.54	
Physical Therapist Assistants	Burlington, Camden and Gloucester Co.	90	0.28	Physical therapist assistants (sometimes called PTAs) and physical therapist aides work under the direction and supervision of physical therapists. They help patients who are recovering from injuries and illnesses regain movement and manage pain.
	Bucks, Chester, and Montgomery Co.	720	1.16	
	Delaware and Philadelphia Co.	570	1.05	
Physical Therapists	Burlington, Camden and Gloucester Co.	1,050	1.52	Physical therapists, sometimes called PTs, help injured or ill people improve their movement and manage their pain. These therapists are often an important part of rehabilitation and treatment of patients with chronic conditions or injuries.
	Bucks, Chester, and Montgomery Co.	1,730	1.09	
	Delaware and Philadelphia Co.	870	1.32	
Physician Assistants	Burlington, Camden and Gloucester Co.	330	0.87	Physician assistants, also known as PAs, practice medicine on a team under the supervision of physicians and surgeons. They are formally educated to examine patients, diagnose injuries and illnesses, and provide treatment.
	Bucks, Chester, and Montgomery Co.	800	1.05	
	Delaware and Philadelphia Co.	870	1.32	
Physicians and Surgeons, All Other	Burlington, Camden and Gloucester Co.	2,030	1.63	All physicians and surgeons not listed separately.
	Bucks, Chester, and Montgomery Co.	2,630	1.07	
	Delaware and Philadelphia Co.	3,610	1.68	

Occupation Title	Area	Estimated Number of Positions	Location Quotient	Occupation Description
Psychiatric Aides	Burlington, Camden and Gloucester Co.	450	1.81	Psychiatric technicians and aides care for people who have mental illness and developmental disabilities. Technicians typically provide therapeutic care. Aides help patients in their daily activities and ensure a safe, clean environment.
	Bucks, Chester, and Montgomery Co.	630	1.28	
	Delaware and Philadelphia Co.	320	0.74	
Psychiatric Technicians	Bucks, Chester, and Montgomery Co.	380	0.84	Psychiatric technicians and aides care for people who have mental illness and developmental disabilities. Technicians typically provide therapeutic care. Aides help patients in their daily activities and ensure a safe, clean environment.
	Delaware and Philadelphia Co.	550	1.41	
Psychiatrists	Burlington, Camden and Gloucester Co.	70	0.80	Physicians who diagnose, treat, and help prevent disorders of the mind.
	Bucks, Chester, and Montgomery Co.	120	0.66	
	Delaware and Philadelphia Co.	320	2.03	
Psychologists, All Other	Bucks, Chester, and Montgomery Co.	40	0.43	Psychologists study cognitive, emotional, and social processes and human behavior by observing, interpreting, and recording how people relate to one another and their environments.
	Delaware and Philadelphia Co.	150	1.74	
Registered Nurses	Burlington, Camden and Gloucester Co.	12,520	1.19	Registered nurses (RNs) provide and coordinate patient care, educate patients and the public about various health conditions, and provide advice and emotional support to patients and their family members.
	Bucks, Chester, and Montgomery Co.	20,260	0.97	
	Delaware and Philadelphia Co.	28,870	1.59	
Rehabilitation Counselors	Burlington, Camden and Gloucester Co.	220	0.58	Rehabilitation counselors help people with emotional and physical disabilities live independently. They work with clients to overcome or manage the personal, social, and professional effects of disabilities on employment or independent living.
	Bucks, Chester, and Montgomery Co.	1,040	1.39	
	Delaware and Philadelphia Co.	1,430	2.19	

Occupation Title	Area	Estimated Number of Positions	Location Quotient	Occupation Description
Social and Community Service Managers	Burlington, Camden and Gloucester Co.	420	0.89	Social and community service managers coordinate and supervise social service programs and community organizations. They direct and lead staff who provide social services to the public.
	Bucks, Chester, and Montgomery Co.	970	1.05	
	Delaware and Philadelphia Co.	1,570	1.96	
Social and Human Service Assistants	Burlington, Camden and Gloucester Co.	4,500	3.80	Social and human service assistants help people get through difficult times or get additional support. They assist other workers, such as social workers, and they help clients find benefits or community services.
	Bucks, Chester, and Montgomery Co.	2,100	0.77	
	Delaware and Philadelphia Co.	4,910	2.14	
Social Scientists and Related Workers, All Other	Bucks, Chester, and Montgomery Co.	100	0.39	All social scientists and related workers not listed separately.
	Delaware and Philadelphia Co.	110	0.46	
Social Workers, All Other	Burlington, Camden and Gloucester Co.	50	0.24	Social workers help people solve and cope with problems in their everyday lives. One group of social workers, clinical social workers, also diagnose and treat mental, behavioral, and emotional issues.
	Bucks, Chester, and Montgomery Co.	170	0.40	
	Delaware and Philadelphia Co.	260	0.68	
Health Care Social Workers	Burlington, Camden and Gloucester Co.	420	0.72	Provide individuals, families, and groups with the psychosocial support needed to cope with chronic, acute, or terminal illnesses. Services include advising family care givers, providing patient education and counseling, and making referrals for other services. May also provide care and case management or interventions designed to promote health, prevent disease, and address barriers to access to healthcare.
	Bucks, Chester, and Montgomery Co.	1,010	1.39	
	Delaware and Philadelphia Co.	1,750	1.74	
Substance Abuse and Behavioral Disorder Counselors	Burlington, Camden and Gloucester Co.	390	1.17	Substance abuse and behavioral disorder counselors advise people who suffer from alcoholism, drug addiction, eating disorders, or other behavioral problems. They provide treatment and support to help the client recover from addiction or modify problem behaviors.
	Bucks, Chester, and Montgomery Co.	1,070	0.97	
	Delaware and Philadelphia Co.	1,300	2.50	